

# Community Health Needs Assessment (CHNA)

## Health Indicators Report for Lee County

### Demographics

Current population demographics and changes in demographic composition over time play a determining role in the types of health and social services needed by communities.

#### Total Population

A total of 35,248 people live in the 724.86 square mile report area defined for this assessment according to the U.S. Census Bureau American Community Survey 2010-14 5-year estimates. The population density for this area, estimated at 48.63 persons per square mile, is less than the national average population density of 88.93 persons per square mile.

Report Area	Total Population	Total Land Area (Square Miles)	Population Density (Per Square Mile)
Lee County, IL	35,248	724.86	48.63
Illinois	12,868,747	55,519.46	231.79
United States	314,107,083	3,531,932.26	88.93

Data Source: US Census Bureau, American Community Survey. 2010-14. Source geography: Tract

#### Total Population by Gender

Report Area	Male	Female	Percent Male	Percent Female
Lee County, IL	18,426	16,822	52.28%	47.72%
Illinois	6,313,324	6,555,423	49.06%	50.94%
United States	154,515,152	159,591,920	49.19%	50.81%

#### Total Population by Age Groups, Percent

Report Area	Age 0-4	Age 5-17	Age 18-24	Age 25-34	Age 35-44	Age 45-54	Age 55-64	Age 65
Lee County, IL	5.49%	15.38%	8.32%	12.14%	12.38%	15.72%	14.02%	16.56%
Illinois	6.3%	17.44%	9.74%	13.84%	13.2%	14.17%	12.13%	13.18%
United States	6.36%	17.13%	9.96%	13.47%	12.96%	14.09%	12.29%	13.75%

## Total Population by Race Alone, Percent

Report Area	White	Black	Asian	Native American / Alaska Native	Native Hawaiian / Pacific Islander	Some Other Race	Multiple Races
Lee County, IL	91.74%	4.71%	0.67%	0.1%	0.29%	0.88%	1.6%
Illinois	72.51%	14.37%	4.88%	0.22%	0.03%	5.84%	2.16%
United States	73.81%	12.6%	5%	0.82%	0.17%	4.7%	2.91%

## Total Population by Ethnicity Alone

Report Area	Total Population	Hispanic or Latino Population	Percent Population Hispanic or Latino	Non-Hispanic Population	Percent Population Non-Hispanic
Lee County, IL	35,248	1,910	5.42%	33,338	94.58%
Illinois	12,868,747	2,095,495	16.28%	10,773,252	83.72%
United States	314,107,072	53,070,096	16.9%	261,036,992	83.1%

## Change in Total Population

According to the United States Census Bureau Decennial Census, between 2000 and 2010 the population in the report area fell by 31 persons, a change of -0.09%. A significant positive or negative shift in total population over time impacts healthcare providers and the utilization of community resources.

Report Area	Total Population, 2000 Census	Total Population, 2010 Census	Total Population Change, 2000-2010	Percent Population Change, 2000-2010
Lee County, IL	36,062	36,031	-31	-0.09%
Illinois	12,416,145	12,830,632	414,487	3.34%
United States	280,405,781	307,745,539	27,339,758	9.75%

Data Source: US Census Bureau, Decennial Census. 2000 - 2010. Source geography: Tract

## Population Change (2000-2010) by Hispanic Origin

Report Area	Hispanic Population Change, Total	Hispanic Population Change, Percent	Non-Hispanic Population Change, Total	Non-Hispanic Population Change, Percent
Lee County, IL	655	57.11%	-686	-1.96%
Illinois	497,354	32.5%	-82,867	-0.76%
United States	15,152,943	42.93%	12,099,099	4.92%

## Families with Children

According to the most recent American Community Survey estimates, 27.18% of all occupied households in the report area are family households with one or more child (ren) under the age of 18. As [defined](#) by the US Census Bureau, a family household is any housing unit in which the householder is living with one or more individuals related to him or her by birth, marriage, or adoption. A non-family household is any household occupied by the householder alone, or by the householder and one or more unrelated individuals.

Report Area	Total Households	Total Family Households	Families with Children (Under Age 18)	Families with Children (Under Age 18), Percent of Total Households
Lee County, IL	13,468	8,921	3,661	27.18%
Illinois	4,778,633	3,131,125	1,544,935	32.33%
United States	116,211,088	76,958,064	37,554,348	32.32%

Data Source: US Census Bureau, American Community Survey. 2010-14. Source geography: Tract

## Population Under Age 18

An estimated 20.87% percent of the population in the report area is under the age of 18 according to the U.S. Census Bureau American Community Survey 2010-14 5-year estimates. An estimated total of 7,356 youths resided in the area during this time period. The number of persons under age 18 is relevant because this population has unique health needs which should be considered separately from other age groups.

Report Area	Total Population	Population Age 0-17	Percent Population Age 0-17
Lee County, IL	35,248	7,356	20.87%
Illinois	12,868,747	3,054,966	23.74%
United States	314,107,072	73,777,656	23.49%

Data Source: US Census Bureau, American Community Survey. 2010-14. Source geography: Tract

## Population Age 0-4

This indicator reports the percentage of children aged 0-4 in the designated geographic area. This indicator is relevant because it is important to understand the percentage of infants and young children in the community, as this population has unique health needs which should be considered separately from other age groups.

Report Area	Total Population	Population Age 0-4	Percent Population Age 0-4
Lee County, IL	35,248	1,934	5.49%
Illinois	12,868,747	810,671	6.3%
United States	314,107,072	19,973,712	6.36%

Data Source: US Census Bureau, American Community Survey. 2010-14. Source geography: Tract

## Population Age 5-17

This indicator reports the percentage of youth aged 5-17 in the designated geographic area. This indicator is relevant because it is important to understand the percentage of youth in the community, as this population has unique health needs which should be considered separately from other age groups.

Report Area	Total Population	Population Age 5-17	Percent Population Age 5-17
Lee County, IL	35,248	5,422	15.38%
Illinois	12,868,747	2,244,295	17.44%
United States	314,107,072	53,803,944	17.13%

Data Source: US Census Bureau, American Community Survey. 2010-14. Source geography: Tract

## **Population Age 18-64**

This indicator reports the percentage of population age 18-64 in the designated geographic area. This indicator is relevant because it is important to understand the percentage of adults in the community, as this population has unique health needs which should be considered separately from other age groups.

Report Area	Total Population	Population Age 18-64	Percent Population Age 18-64
Lee County, IL	35,248	22,055	62.57%
Illinois	12,868,747	8,117,498	63.08%
United States	314,107,072	197,151,488	62.77%

Data Source: US Census Bureau, American Community Survey. 2010-14. Source geography: Tract

## **Population Age 65+**

An estimated 16.56% percent of the population in the report area is age 65 or older according to the U.S. Census Bureau American Community Survey 2010-14 5-year estimates. An estimated total of 5,837 older adults resided in the area during this time period. The number of persons age 65 or older is relevant because this population has unique health needs which should be considered separately from other age groups.

Report Area	Total Population	Population Age 65	Percent Population Age 65
Lee County, IL	35,248	5,837	16.56%
Illinois	12,868,747	1,696,283	13.18%
United States	314,107,072	43,177,960	13.75%

Data Source: US Census Bureau, American Community Survey. 2010-14. Source geography: Tract

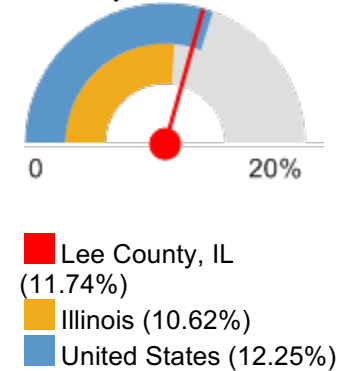
## Population with Any Disability

This indicator reports the percentage of the total civilian non-institutionalized population with a disability. This indicator is relevant because disabled individuals comprise a vulnerable population that requires targeted services and outreach by providers.

Report Area	Total Population (For Whom Disability Status Is Determined)	Total Population with a Disability	Percent Population with a Disability
Lee County, IL	32,752	3,846	11.74%
Illinois	12,690,056	1,347,468	10.62%
United States	309,082,272	37,874,568	12.25%

Data Source: US Census Bureau, American Community Survey. 2010-14. Source geography: Tract

Percent Population with a Disability



## Population with Any Disability by Age Group, Percent

Report Area	Under Age 18	Age 18 - 64	Age 65
Lee County, IL	4.61%	9.16%	31.72%
Illinois	3.39%	8.36%	35.23%
United States	4.06%	10.18%	36.25%

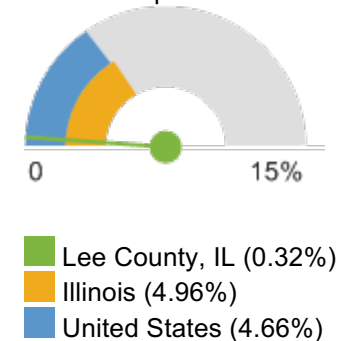
## Population in Limited English Households

This indicator reports the percentage of the population aged 5 and older living in Limited English speaking households. A "Limited English speaking household" is one in which no member 14 years old and over (1) speaks only English at home or (2) speaks a language other than English at home and speaks English "Very well." This indicator is significant as it identifies households and populations that may need English-language assistance.

Report Area	Total Population Age 5	Linguistically Isolated Population	Percent Linguistically Isolated Population
Lee County, IL	33,314	108	0.32%
Illinois	12,058,076	597,875	4.96%
United States	294,133,376	13,692,809	4.66%

Data Source: US Census Bureau, American Community Survey. 2010-14. Source geography: Tract

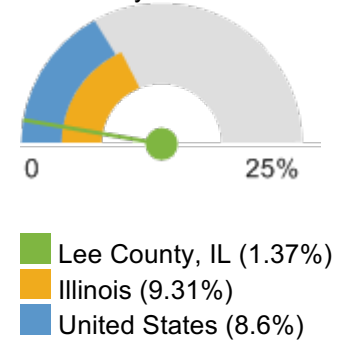
Percent Linguistically Isolated Population



## Population with Limited English Proficiency

This indicator reports the percentage of the population aged 5 and older who speak a language other than English at home and speak English less than "very well." This indicator is relevant because an inability to speak English well creates barriers to healthcare access, provider communications, and health literacy/education.

Percent Population Age 5 with Limited English Proficiency



Report Area	Population Age 5	Population Age 5 with Limited English Proficiency	Percent Population Age 5 with Limited English Proficiency
Lee County, IL	33,314	456	1.37%
Illinois	12,058,076	1,122,349	9.31%
United States	294,133,388	25,305,204	8.6%

Data Source: US Census Bureau, American Community Survey. 2010-14. Source geography: Tract

## Foreign-Born Population

This indicator reports the percentage of the population that is foreign-born. The foreign-born population includes anyone who was not a U.S. citizen or a U.S. national at birth. This includes any non-citizens, as well as persons born outside of the U.S. who have become naturalized citizens. The native U.S. population includes any person born in the United States, Puerto Rico, a U.S. Island Area (such as Guam), or abroad of American (U.S. citizen) parent or parents. The latest figures from the U.S. Census Bureau show that 843 persons in the report area are of foreign birth, which represents 2.39% of the report area population. This percentage is less than the national rate of 12.95%.

Report Area	Total Population	Naturalized U.S. Citizens	Population Without U.S. Citizenship	Total Foreign-Birth Population	Foreign-Birth Population, Percent of Total Population
Lee County, IL	35,248	323	520	843	2.39%
Illinois	12,868,747	838,686	948,240	1,786,926	13.89%
United States	314,107,072	18,800,048	22,256,836	41,056,884	13.07%

Data Source: US Census Bureau, American Community Survey. 2010-14. Source geography: Tract

## Hispanic Population

The estimated population that is of Hispanic, Latino, or Spanish origin in the report area is 1,910. This represents 5.42% of the total report area population, which is less than the national 16.62% rate. Origin can be viewed as the heritage, nationality group, lineage, or country of birth of the person or the person's parents or ancestors before their arrival in the United States. People who identify their origin as Hispanic, Latino, or Spanish may be of any race.

Report Area	Total Population	Non-Hispanic Population	Percent Population Non-Hispanic	Hispanic or Latino Population	Percent Population Hispanic or Latino
Lee County, IL	35,248	33,338	94.58%	1,910	5.42%
Illinois	12,868,747	10,773,252	83.72%	2,095,495	16.28%
United States	314,107,072	261,036,992	83.1%	53,070,096	16.9%

Data Source: US Census Bureau, American Community Survey. 2010-14. Source geography: Tract

## **Hispanic Population by Age Group**

Report Area	Age 0-4	Age 5-17	Age 18-24	Age 25-34	Age 35-44	Age 45-54	Age 55-64	Age 65
Lee County, IL	197	436	261	309	326	161	129	91
Illinois	204,004	522,052	247,082	351,220	322,026	221,335	131,731	96,045
United States	5,125,083	12,436,576	6,430,333	8,649,852	7,691,801	5,913,528	3,659,927	3,162,996

## Urban and Rural Population

This indicator reports the percentage of the population living in urban and rural areas. Urban areas are identified using population density, count, and size thresholds. Urban areas also include territory with a high degree of impervious surface (development). Rural areas are all areas that are not urban.

Report Area	Total Population	Urban Population	Rural Population	Percent Urban	Percent Rural
Lee County, IL	36,031	16,858	19,173	46.79%	53.21%
Illinois	12,830,632	11,353,553	1,477,079	88.49%	11.51%
United States	312,471,327	252,746,527	59,724,800	80.89%	19.11%

Data Source: US Census Bureau, Decennial Census. 2010. Source geography: Tract



## **Veteran Population**

This indicator reports the percentage of the population age 18 and older that served (even for a short time), but is not currently serving, on active duty in the U.S. Army, Navy, Air Force, Marine Corps, or the Coast Guard, or that served in the U.S. Merchant Marines during World War II.

Report Area	Total Population Age 18	Total Veterans	Veterans, Percent of Total Population
Lee County, IL	27,885	2,887	10.35%
Illinois	9,796,516	699,522	7.14%
United States	239,305,216	20,700,712	8.65%

Data Source: US Census Bureau, American Community Survey. 2010-14. Source geography: Tract

## **Veteran Population by Gender**

Report Area	Male	Female	Percent Male	Percent Female
Lee County, IL	2,759	128	18.79%	0.97%
Illinois	657,620	41,902	13.87%	0.83%
United States	19,125,266	1,575,445	16.5%	1.28%

## **Veteran Population by Age Group, Percent**

Report Area	Age 18-34	Age 35-54	Age 55-64	Age 65-74	Age 75
Lee County, IL	4.9%	6.84%	11.86%	18.35%	25.59%
Illinois	1.86%	4.46%	9.7%	17.19%	22.84%
United States	2.37%	6.04%	11.72%	19.29%	24.5%

## Social Economic Factors

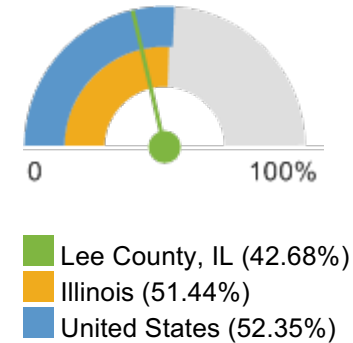
Economic and social insecurity often are associated with poor health. Poverty, unemployment, and lack of educational achievement affect access to care and a community's ability to engage in healthy behaviors. Without a network of support and a safe community, families cannot thrive. Ensuring access to social and economic resources provides a foundation for a healthy community.

### Children Eligible for Free/Reduced Price Lunch

Within the report area 1,827 public school students or 42.68% are eligible for Free/Reduced Price lunch out of 4,281 total students enrolled. This indicator is relevant because it assesses vulnerable populations which are more likely to have multiple health access, health status, and social support needs. Additionally, when combined with poverty data, providers can use this measure to identify gaps in eligibility and enrollment.

Report Area	Total Students	Number Free/Reduced Price Lunch Eligible	Percent Free/Reduced Price Lunch Eligible
Lee County, IL	4,281	1,827	42.68%
Illinois	2,049,231	1,044,588	51.44%
United States	50,195,195	26,012,902	52.35%

Percent Students Eligible for Free or Reduced Price Lunch



Data Source: National Center for Education Statistics, NCES - Common Core of Data. 2013-14. Source geography: Address

### **Children Eligible for Free Lunch (Alone) by Year, 2009-10 through 2013-14**

The table below shows local, state, and National trends in student free and reduced lunch eligibility.

*Note: Data for the 2011-12 school year are omitted due to lack of data for some states.*

Report Area	2009-10	2010-11	2012-13	2013-14
Lee County, IL	37.58%	40.72%	44.11%	42.71%
Illinois	51.26%	51.37%	50.61%	51.54%
United States	47.76%	49.24%	51.77%	52.45%

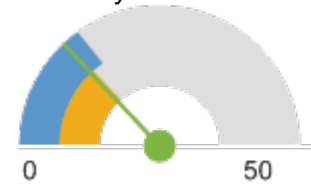
## **Food Insecurity Rate**

This indicator reports the estimated percentage of the population that experienced food insecurity at some point during the report year. Food insecurity is the household-level economic and social condition of limited or uncertain access to adequate food.

Report Area	Total Population	Food Insecure Population, Total	Food Insecurity Rate
Lee County, IL	35,535	4,590	12.92%
Illinois	12,882,135	1,755,180	13.62%
United States	320,750,757	48,770,990	15.21%

Data Source: Feeding America. 2013. Source geography: County

Percentage of the Population with Food Insecurity



■ Lee County, IL (12.92)  
■ Illinois (13.62)  
■ United States (15.21)

## **Food Insecurity - Food Insecure Children**

This indicator reports the estimated percentage of the population under age 18 that experienced food insecurity at some point during the report year. Food insecurity is the household-level economic and social condition of limited or uncertain access to adequate food.

Report Area	Population Under Age 18	Food Insecure Children, Total	Child Food Insecurity Rate
Lee County, IL	7,522	1,620	21.54%
Illinois	3,022,155	643,040	21.28%
United States	73,580,326	17,284,530	23.49%

## Food Insecurity - Food Insecure Population Ineligible for Assistance

This indicator reports the estimated percentage of the total population and the population under age 18 that experienced food insecurity at some point during the report year, but are ineligible for State or Federal nutrition assistance. Food insecurity is the household-level economic and social condition of limited or uncertain access to adequate food. Assistance eligibility is determined based on household income of the food insecure households relative to the maximum income-to-poverty ratio for assistance programs (SNAP, WIC, school meals, CSFP and TEFAP).

Report Area	Food Insecure Population, Total	Percentage of Food Insecure Population Ineligible for Assistance	Food Insecure Children, Total	Percentage of Food Insecure Children Ineligible for Assistance
Lee County, IL	4,590	35.01%	1,620	30%
Illinois	1,755,180	32%	643,040	31%
United States	48,770,990	29%	17,284,530	31%

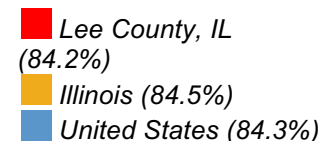
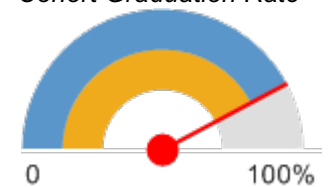
## High School Graduation Rate (EdFacts)

Within the report area 84.2% of students are receiving their high school diploma within four years. This indicator is relevant because research suggests education is one the strongest predictors of health ([Freudenberg Ruglis, 2007](#)).

Report Area	Total Student Cohort	Estimated Number of Diplomas Issued	Cohort Graduation Rate
Lee County, IL	336	283	84.2
Illinois	90,143	76,182	84.5
United States	3,127,886	2,635,290	84.3

Data Source: US Department of Education, ED Facts. Accessed via DATA.GOV. Additional data analysis by CARES. 2013-14. Source geography: School District

Cohort Graduation Rate

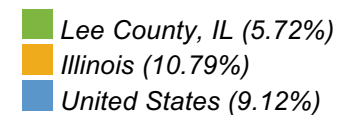
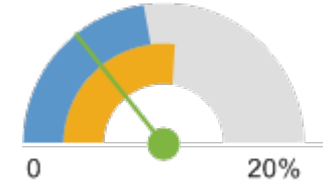


## Households with No Motor Vehicle

This indicator reports the number and percentage of households with no motor vehicle based on the latest 5-year American Community Survey estimates.

Report Area	Total Occupied Households	Households with No Motor Vehicle	Percentage of Households with No Motor Vehicle
Lee County, IL	13,468	770	5.72%
Illinois	4,778,633	515,427	10.79%
United States	116,211,088	10,594,153	9.12%

Percentage of Households with No Motor Vehicle



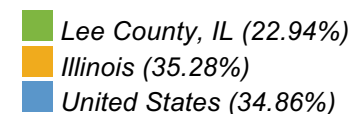
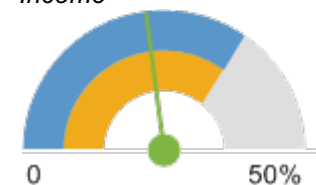
Data Source: US Census Bureau, American Community Survey. 2010-14. Source geography: Tract

## Housing Cost Burden (30%)

This indicator reports the percentage of the households where housing costs exceed 30% of total household income. This indicator provides information on the cost of monthly housing expenses for owners and renters. The information offers a measure of housing affordability and excessive shelter costs. The data also serve to aid in the development of housing programs to meet the needs of people at different economic levels.

Report Area	Total Households	Cost Burdened Households (Housing Costs Exceed 30% of Income)	Percentage of Cost Burdened Households (Over 30% of Income)
Lee County, IL	13,468	3,090	22.94%
Illinois	4,778,633	1,685,725	35.28%
United States	116,211,096	40,509,856	34.86%

Percentage of Households where Housing Costs Exceed 30% of Income



Data Source: US Census Bureau, American Community Survey. 2010-14. Source geography: Tract

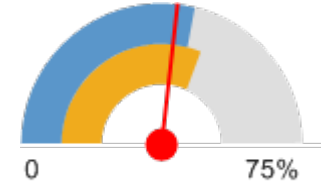
## Income - Families Earning Over \$75,000

In the report area, 40.3%, or 3,595 families report a total annual income of \$75,000 or greater. Total income includes all reported income from wages and salaries as well as income from self-employment, interest or dividends, public assistance, retirement, and other sources. As [defined](#) by the US Census Bureau, a family household is any housing unit in which the householder is living with one or more individuals related to him or her by birth, marriage, or adoption. A non-family household is any household occupied by the householder alone, or by the householder and one or more unrelated individuals.

Report Area	Total Families	Families with Income Over \$75,000	Percent Families with Income Over \$75,000
Lee County, IL	8,921	3,595	40.3%
Illinois	3,131,125	1,480,485	47.28%
United States	76,958,064	33,389,114	43.39%

Data Source: US Census Bureau, American Community Survey. 2010-14. Source geography: Tract

Percent Families with Income Over \$75,000



■ Lee County, IL (40.3%)  
■ Illinois (47.28%)  
■ United States (43.39%)

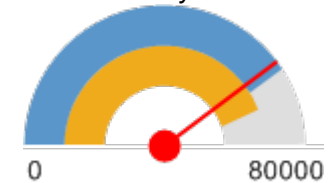
## Income - Median Family Income

This indicator reports median family income based on the latest 5-year American Community Survey estimates. A family household is any housing unit in which the householder is living with one or more individuals related to him or her by birth, marriage, or adoption. Family income includes the incomes of all family members age 15 and older.

Report Area	Total Family Households	Average Family Income	Median Family Income
Lee County, IL	8,921	\$74,525	\$63,828
Illinois	3,131,125	\$92,664	\$70,967
United States	76,958,064	\$86,963	\$65,443

Data Source: US Census Bureau, American Community Survey. 2010-14. Source geography: Tract

Median Family Income



■ Lee County, IL (63,828)  
■ Illinois (70,967)  
■ United States (65,443)

## Median Family Income by Family Composition

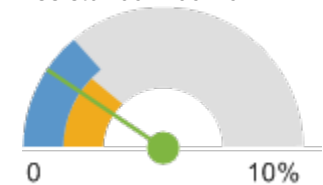
Report Area	Married-Couple Families without Children	Married-Couple Families with Children	Single-Males without Children	Single-Males with Children	Single Females without Children	Single Females with Children
Lee County, IL	\$72,565	\$70,852	\$53,958	\$43,102	\$52,750	\$22,578
Illinois	\$81,633	\$90,683	\$55,426	\$38,511	\$45,543	\$24,833
United States	\$75,434	\$84,541	\$51,768	\$37,640	\$43,046	\$24,403

## Income - Public Assistance Income

This indicator reports the percentage of households receiving public assistance income. Public assistance income includes general assistance and Temporary Assistance to Needy Families (TANF). Separate payments received for hospital or other medical care (vendor payments) are excluded. This does not include Supplemental Security Income (SSI) or noncash benefits such as Food Stamps.

Report Area	Total Households	Households with Public Assistance Income	Percent Households with Public Assistance Income
Lee County, IL	13,468	252	1.87%
Illinois	4,778,633	120,020	2.51%
United States	116,211,088	3,274,407	2.82%

Percent Households with Public Assistance Income



- Lee County, IL (1.87%)
- Illinois (2.51%)
- United States (2.82%)

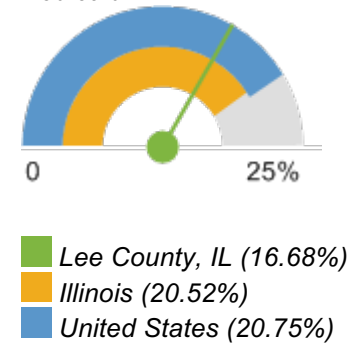
Data Source: US Census Bureau, American Community Survey. 2010-14. Source geography: Tract

## Insurance - Population Receiving Medicaid

This indicator reports the percentage of the population with insurance enrolled in Medicaid (or other means-tested public health insurance). This indicator is relevant because it assesses vulnerable populations which are more likely to have multiple health access, health status, and social support needs; when combined with poverty data, providers can use this measure to identify gaps in eligibility and enrollment.

Report Area	Total Population (For Whom Insurance Status is Determined)	Population with Any Health Insurance	Population Receiving Medicaid	Percent of Insured Population Receiving Medicaid
Lee County, IL	32,752	29,608	4,939	16.68%
Illinois	12,690,056	11,126,169	2,282,641	20.52%
United States	309,082,272	265,204,128	55,035,660	20.75%

Percent of Insured Population Receiving Medicaid



Data Source: US Census Bureau, American Community Survey. 2010-14. Source geography: Tract

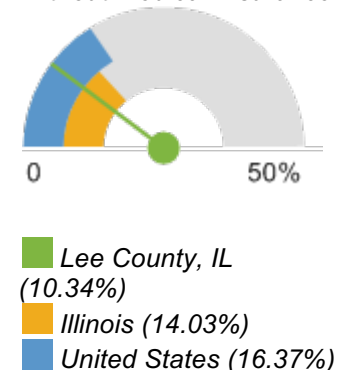
## Insurance - Uninsured Adults

The lack of health insurance is considered a key driver of health status.

This indicator reports the percentage of adults age 18 to 64 without health insurance coverage. This indicator is relevant because lack of insurance is a primary barrier to healthcare access including regular primary care, specialty care, and other health services that contributes to poor health status.

Report Area	Total Population Age 18 - 64	Population with Medical Insurance	Percent Population With Medical Insurance	Population Without Medical Insurance	Percent Population Without Medical Insurance
Lee County, IL	19,305	17,308	89.66%	1,997	10.34%
Illinois	7,910,376	6,800,762	85.97%	1,109,614	14.03%
United States	193,600,545	161,899,011	83.63%	31,701,534	16.37%

Percent Population Without Medical Insurance



Data Source: US Census Bureau, Small Area Health Insurance Estimates. 2014. Source geography: County



## Uninsured Population Age 18 - 64, Percent by Year, 2010 through 2014

Report Area	2010	2011	2012	2013	2014
Lee County, IL	15.9%	14.5%	14.9%	14%	10.3%
Illinois	19.96%	19.09%	18.81%	18.49%	14.03%
United States	21.24%	20.82%	20.46%	20.13%	16.14%

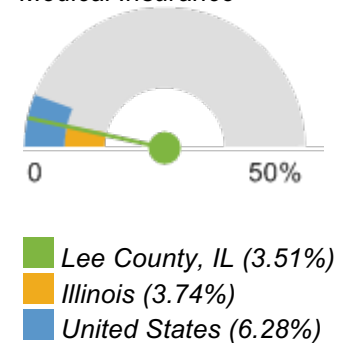
## Insurance - Uninsured Children

The lack of health insurance is considered a key driver of health status.

This indicator reports the percentage of children under age 19 without health insurance coverage. This indicator is relevant because lack of insurance is a primary barrier to healthcare access including regular primary care, specialty care, and other health services that contributes to poor health status.

Report Area	Total Population Under Age 19	Population with Medical Insurance	Percent Population With Medical Insurance	Population Without Medical Insurance	Percent Population Without Medical Insurance
Lee County, IL	7,314	7,057	96.49%	257	3.51%
Illinois	3,099,273	2,983,260	96.26%	116,013	3.74%
United States	76,146,139	71,365,802	93.72%	4,780,337	6.28%

Percent Population Without Medical Insurance



Data Source: US Census Bureau, Small Area Health Insurance Estimates. 2014. Source geography: County

## **Insurance - Uninsured Population**

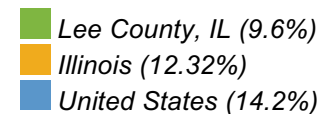
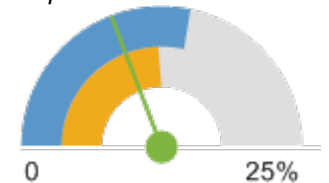
The lack of health insurance is considered a key driver of health status.

This indicator reports the percentage of the total civilian non-institutionalized population without health insurance coverage. This indicator is relevant because lack of insurance is a primary barrier to healthcare access including regular primary care, specialty care, and other health services that contributes to poor health status.

Report Area	Total Population (For Whom Insurance Status is Determined)	Total Uninsured Population	Percent Uninsured Population
Lee County, IL	32,752	3,144	9.6%
Illinois	12,690,056	1,563,887	12.32%
United States	309,082,272	43,878,140	14.2%

Data Source: US Census Bureau, American Community Survey. 2010-14. Source geography: Tract

Percent Uninsured Population



## **Uninsured Population by Age Group, Percent**

Report Area	Under Age 18	Age 18 - 64	Age 65
Lee County, IL	4.36%	13.86%	0.48%
Illinois	3.8%	17.83%	1.22%
United States	7.08%	19.76%	0.98%

## **Uninsured Population by Ethnicity Alone**

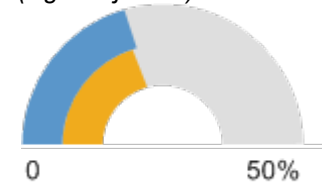
Report Area	Total Hispanic / Latino	Total Not Hispanic / Latino	Percent Hispanic / Latino	Percent Not Hispanic or Latino
Lee County, IL	300	2,844	18.68%	9.13%
Illinois	522,450	1,041,437	25.13%	9.81%
United States	14,703,706	29,174,434	28.09%	11.36%

## Lack of Social or Emotional Support

This indicator reports the percentage of adults aged 18 and older who self-report that they receive insufficient social and emotional support all or most of the time. This indicator is relevant because social and emotional support is critical for navigating the challenges of daily life as well as for good mental health. Social and emotional support is also linked to educational achievement and economic stability.

Report Area	Total Population Age 18	Estimated Population Without Adequate Social / Emotional Support	Percentage
Lee County, IL	28,147	5,151	18.3%
Illinois	9,654,603	1,969,539	20.4%
United States	232,556,016	48,104,656	20.7%

Percent Adults Without Adequate Social / Emotional Support (Age-Adjusted)



■ Illinois (20.4%)  
■ United States (20.7%)

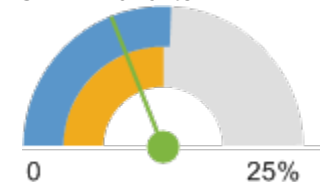
Data Source: Centers for Disease Control and Prevention, Behavioral Risk Factor Surveillance System. Accessed via the Health Indicators Warehouse. US Department of Health Human Services, Health Indicators Warehouse. 2006-12. Source geography: County

## Population Receiving SNAP Benefits (ACS)

This indicator reports the estimated percentage of households receiving the Supplemental Nutrition Assistance Program (SNAP) benefits. This indicator is relevant because it assesses vulnerable populations which are more likely to have multiple health access, health status, and social support needs; when combined with poverty data, providers can use this measure to identify gaps in eligibility and enrolment.

Report Area	Total Households	Households Receiving SNAP Benefits	Percent Households Receiving SNAP Benefits
Lee County, IL	13,468	1,278	9.49%
Illinois	4,778,633	599,455	12.54%
United States	116,211,088	15,089,358	12.98%

Percent Households Receiving SNAP Benefits



■ Lee County, IL (9.49%)  
■ Illinois (12.54%)  
■ United States (12.98%)

Data Source: US Census Bureau, American Community Survey. 2010-14. Source geography: Tract

## Households Receiving SNAP Benefits by Race/Ethnicity, Percent

Report Area	Total Population	Non-Hispanic White	Black	Asian	American Indian / Alaska Native	Other Race	Multiple Race	Hispanic / Latino
Lee County, IL	9.49%	8.26%	49.66	0%	64.29%	10.19%	15.52%	18.4%
Illinois	12.54%	6.75%	33.02	7.8%	24.89%	23.2%	20.58%	20.9%
United States	12.98%	7.99%	28.07	7.42%	26.45%	24.04%	20.23%	22.24%

## Percent Population Receiving SNAP Benefits by Year, 2005 through 2013

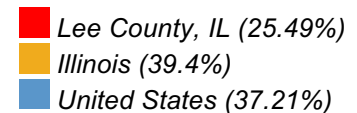
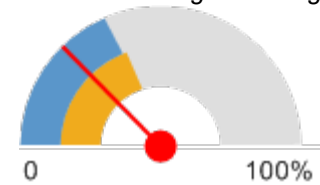
Report Area	2005	2006	2007	2008	2009	2010	2011	2012	2013
Lee County, IL	5.31%	4.89%	4.8%	5.19%	5.16%	5.69%	6.8%	8.05%	10.04%
Illinois	9.8%	9.91%	10.23%	11.17%	12.69%	14.06%	14.62%	15.99%	15.97%
United States	9.05%	9%	9.38%	10.68%	12.94%	14.5%	15.19%	15.49%	15.82%

## Population with Associate's Level Degree or Higher

25.49% of the population aged 25 and older, or 6,362 have obtained an Associate's level degree or higher. This indicator is relevant because educational attainment has been linked to positive health outcomes.

Report Area	Total Population Age 25	Population Age 25 with Associate's Degree or Higher	Percent Population Age 25 with Associate's Degree or Higher
Lee County, IL	24,960	6,362	25.49%
Illinois	8,560,555	3,373,016	39.4%
United States	209,056,128	77,786,232	37.21%

Percent Population Age 25 with Associate's Degree or Higher



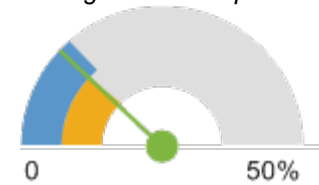
Data Source: US Census Bureau, American Community Survey. 2010-14. Source geography: Tract

## **Population with No High School Diploma**

Within the report area there are 2,966 persons aged 25 and older without a high school diploma (or equivalency) or higher. This represents 11.88% of the total population aged 25 and older. This indicator is relevant because educational attainment is linked to positive health outcomes ([Freudenberg Ruglis, 2007](#)).

Report Area	Total Population Age 25	Population Age 25 with No High School Diploma	Percent Population Age 25 with No High School Diploma
Lee County, IL	24,960	2,966	11.88%
Illinois	8,560,555	1,062,144	12.41%
United States	209,056,128	28,587,748	13.67%

Percent Population Age 25 with No High School Diploma



- Lee County, IL (11.88%)
- Illinois (12.41%)
- United States (13.67%)

Data Source: US Census Bureau, American Community Survey. 2010-14. Source geography: Tract

## **Population with No High School Diploma by Ethnicity Alone**

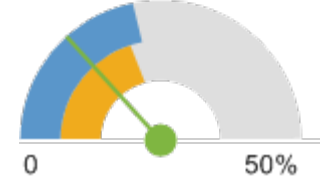
Report Area	Total Hispanic / Latino	Total Not Hispanic / Latino	Percent Hispanic / Latino	Percent Not Hispanic / Latino
Lee County, IL	336	2,630	33.07%	10.98%
Illinois	423,250	638,894	37.71%	8.59%
United States	10,436,617	18,151,132	35.89%	10.09%

## Poverty - Children Below 100% FPL

In the report area 13.3% or 954 children aged 0-17 are living in households with income below the Federal Poverty Level (FPL). This indicator is relevant because poverty creates barriers to access including health services, healthy food, and other necessities that contribute to poor health status.

Report Area	Total Population	Population Under Age 18	Population Under Age 18 in Poverty	Percent Population Under Age 18 in Poverty
Lee County, IL	32,536	7,174	954	13.3%
Illinois	12,566,139	3,011,614	612,922	20.35%
United States	306,226,400	72,637,888	15,907,395	21.9%

Percent Population Under Age 18 in Poverty



- Lee County, IL (13.3%)
- Illinois (20.35%)
- United States (21.9%)

Data Source: US Census Bureau, American Community Survey. 2010-14. Source geography: Tract

## Children in Poverty by Ethnicity Alone

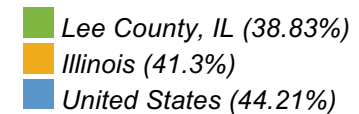
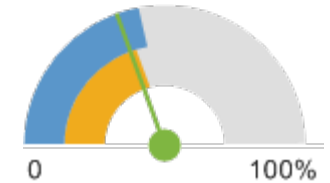
Report Area	Total Hispanic / Latino	Total Not Hispanic / Latino	Percent Hispanic / Latino	Percent Not Hispanic or Latino
Lee County, IL	157	797	24.8%	12.18%
Illinois	197,532	415,390	27.57%	18.1%
United States	5,652,576	10,254,819	32.7%	18.53%

## **Poverty - Children Below 200% FPL**

In the report area 38.83% or 2,786 children are living in households with income below 200% of the Federal Poverty Level (FPL). This indicator is relevant because poverty creates barriers to access including health services, healthy food, and other necessities that contribute to poor health status.

Report Area	Total Population Under Age 18	Population Under Age 18 at or Below 200% FPL	Percent Population Under Age 18 at or Below 200% FPL
Lee County, IL	7,174	2,786	38.83%
Illinois	3,011,614	1,243,877	41.3%
United States	72,637,888	32,116,426	44.21%

Percent Population Under Age 18 at or Below 200% FPL



Data Source: US Census Bureau, American Community Survey. 2010-14. Source geography: Tract

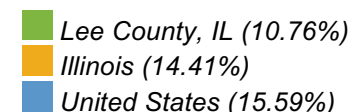
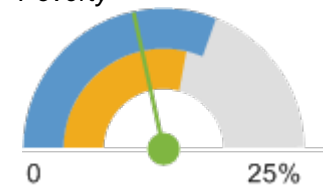
## **Poverty - Population Below 100% FPL**

Poverty is considered a key driver of health status.

Within the report area 10.76% or 3,501 individuals are living in households with income below the Federal Poverty Level (FPL). This indicator is relevant because poverty creates barriers to access including health services, healthy food, and other necessities that contribute to poor health status.

Report Area	Total Population	Population in Poverty	Percent Population in Poverty
Lee County, IL	32,536	3,501	10.76%
Illinois	12,566,139	1,810,470	14.41%
United States	306,226,400	47,755,608	15.59%

Percent Population in Poverty



Data Source: US Census Bureau, American Community Survey. 2010-14. Source geography: Tract

### Population in Poverty by Ethnicity Alone

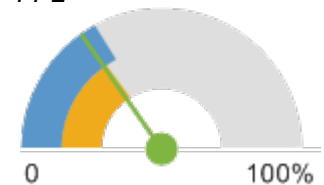
Report Area	Total Hispanic / Latino	Total Not Hispanic / Latino	Percent Hispanic / Latino	Percent Not Hispanic / Latino
Lee County, IL	357	3,144	22.23%	10.16%
Illinois	429,457	1,381,013	20.8%	13.15%
United States	12,880,559	34,875,048	24.77%	13.72%

### Poverty - Population Below 200% FPL

In the report area 30.68% or 9,983 individuals are living in households with income below 200% of the Federal Poverty Level (FPL). This indicator is relevant because poverty creates barriers to access including health services, healthy food, and other necessities that contribute to poor health status.

Percent Population with Income at or Below 200% FPL

Report Area	Total Population	Population with Income at or Below 200% FPL	Percent Population with Income at or Below 200% FPL
Lee County, IL	32,536	9,983	30.68%
Illinois	12,566,139	4,004,005	31.86%
United States	306,226,400	105,773,408	34.54%



- Lee County, IL (30.68%)
- Illinois (31.86%)
- United States (34.54%)

Data Source: US Census Bureau, American Community Survey. 2010-14. Source geography: Tract

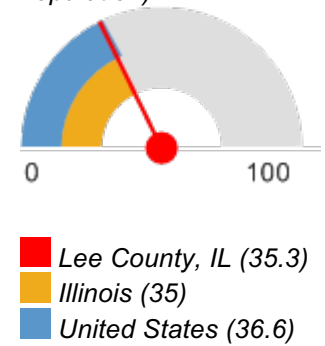


## **Teen Births**

This indicator reports the rate of total births to women age of 15 - 19 per 1,000 female population age 15 - 19. This indicator is relevant because in many cases, teen parents have unique social, economic, and health support services. Additionally, high rates of teen pregnancy may indicate the prevalence of unsafe sex practices.

Report Area	Female Population Age 15 - 19	Births to Mothers Age 15 - 19	Teen Birth Rate (Per 1,000 Population)
Lee County, IL	1,150	41	35.3
Illinois	448,356	15,692	35
United States	10,736,677	392,962	36.6

Teen Birth Rate (Per 1,000 Population)



Data Source: US Department of Health Human Services, Health Indicators Warehouse. Centers for Disease Control and Prevention, National Vital Statistics System. Accessed via CDC WONDER. 2006-12. Source geography: County

### **Births to Women Age 15-19, Rate (per 1,000 Pop.) by Time Period, 2002-2008 through 2006-2012**

Report Area	2002-2008	2003-2009	2004-2010	2005-2011	2006-2012
Lee County, IL	33.2	36.3	35.5	35.9	35.3
Illinois	39.9	39	38	36.5	35
United States	41	40.3	39.3	38	36.6

### **Births to Women Age 15-19, Rate (per 1,000 Pop.) by Race / Ethnicity**

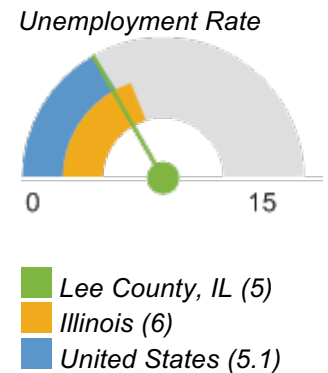
Report Area	Non-Hispanic White	Non-Hispanic Black	Hispanic or Latino
Lee County, IL	32.6	no data	60.2
Illinois	19.2	66.3	57.9
United States	24.6	54.9	62

## Unemployment Rate

Total unemployment in the report area for the current month was 915, or 5% of the civilian non-institutionalized population age 16 and older (non-seasonally adjusted). This indicator is relevant because unemployment creates financial instability and barriers to access including insurance coverage, health services, healthy food, and other necessities that contribute to poor health status.

Report Area	Labor Force	Number Employed	Number Unemployed	Unemployment Rate
Lee County, IL	18,130	17,215	915	5
Illinois	6,664,394	6,266,273	398,121	6
United States	161,260,305	152,994,993	8,265,312	5.1

Data Source: US Department of Labor, Bureau of Labor Statistics. 2016 - May. Source geography: County



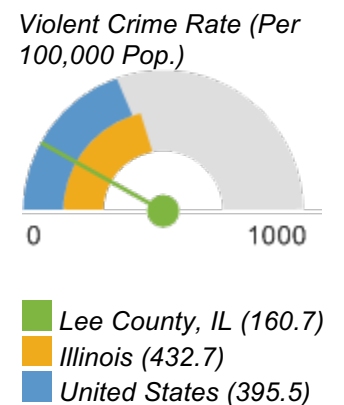
### Average Annual Unemployment Rate, 2005-2015

Report Area	2005	2006	2007	2008	2009	2010	2011	2012	2013	2014	2015
Lee County, IL	5.3	4.7	5.3	7	10.3	10.1	9.1	8.3	8.1	6.2	5.4
Illinois	5.8	4.6	5.1	6.4	10	10.4	9.7	9	9.1	7.1	5.9
United States	5.2	4.7	4.7	5.8	9.3	9.7	9	8.1	7.4	6.2	5.3

## Violent Crime

This indicator reports the rate of violent crime offenses reported by law enforcement per 100,000 residents. Violent crime includes homicide, rape, robbery, and aggravated assault. This indicator is relevant because it assesses community safety.

Report Area	Total Population	Violent Crimes	Violent Crime Rate (Per 100,000 Pop.)
Lee County, IL	30,291	49	160.7
Illinois	12,448,620	53,864	432.7
United States	306,859,354	1,213,859	395.5



Data Source: Federal Bureau of Investigation, FBI Uniform Crime Reports. Additional analysis by the National Archive of Criminal Justice Data. Accessed via the Inter-university Consortium for Political and Social Research. 2010-12. Source geography: County

## Physical Environment

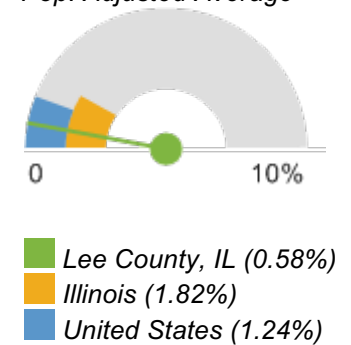
A community's health also is affected by the physical environment. A safe, clean environment that provides access to healthy food and recreational opportunities is important to maintaining and improving community health.

### Air Quality - Ozone

Within the report area, 2.11, or 0.58% of days exceeded the emission standard of 75 parts per billion (ppb). This indicator reports the percentage of days per year with Ozone (O<sub>3</sub>) levels above the National Ambient Air Quality Standard of 75 parts per billion (ppb). Figures are calculated using data collected by monitoring stations and modeled to include census tracts where no monitoring stations exist. This indicator is relevant because poor air quality contributes to respiratory issues and overall poor health.

Report Area	Total Population	Average Daily Ambient Ozone Concentration	Number of Days Exceeding Emissions Standards	Percentage of Days Exceeding Standards, Crude Average	Percentage of Days Exceeding Standards, Pop. Adjusted Average
Lee County, IL	36,031	39.01	2.11	0.58%	0.58%
Illinois	12,830,632	37.89	6.81	1.87%	1.82%
United States	312,471,327	38.95	4.46	1.22%	1.24%

Percentage of Days Exceeding Standards, Pop. Adjusted Average



Data Source: Centers for Disease Control and Prevention, National Environmental Public Health Tracking Network. 2012. Source geography: Tract

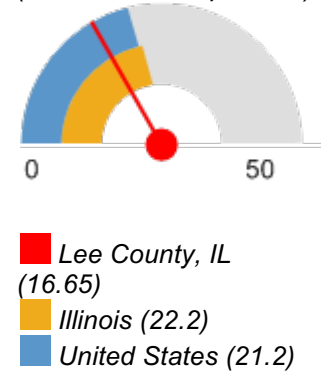
## **Food Access - Grocery Stores**

This indicator reports the number of grocery stores per 100,000 population. Grocery stores are defined as supermarkets and smaller grocery stores primarily engaged in retailing a general line of food, such as canned and frozen foods; fresh fruits and vegetables; and fresh and prepared meats, fish, and poultry. Included are delicatessen-type establishments. Convenience stores and large general merchandise stores that also retail food, such as supercenters and warehouse club stores are excluded. This indicator is relevant because it provides a measure of healthy food access and environmental influences on dietary behaviors.

Report Area	Total Population	Number of Establishments	Establishments, Rate per 100,000 Population
Lee County, IL	36,031	6	16.65
Illinois	12,830,632	2,850	22.2
United States	312,732,537	66,286	21.2

Data Source: US Census Bureau, County Business Patterns. Additional data analysis by CARES. 2013. Source geography: County

Grocery Stores, Rate (Per 100,000 Population)



## **Grocery Stores and Supermarkets, Rate per 100,000 Population by Year, 2008 through 2012**

Report Area	2008	2009	2010	2011	2012	2013
Lee County, IL	19.43	16.65	16.65	19.43	16.65	16.65
Illinois	21.33	21.2	21.99	22.06	22.5	22.21
United States	20.28	20.36	20.6	20.59	21.14	21.21

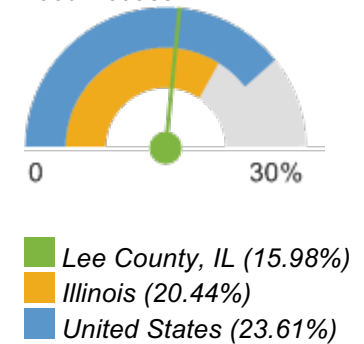
## **Food Access - Low Food Access**

This indicator reports the percentage of the population living in census tracts designated as food deserts. A food desert is defined as a low-income census tract (where a substantial number or share of residents has low access to a supermarket or large grocery store). This indicator is relevant because it highlights populations and geographies facing food insecurity.

Report Area	Total Population	Population with Low Food Access	Percent Population with Low Food Access
Lee County, IL	36,031	5,759	15.98%
Illinois	12,830,632	2,623,048	20.44%
United States	308,745,538	72,905,540	23.61%

Data Source: US Department of Agriculture, Economic Research Service, USDA - Food Access Research Atlas. 2010. Source geography: Tract

Percent Population with Low Food Access

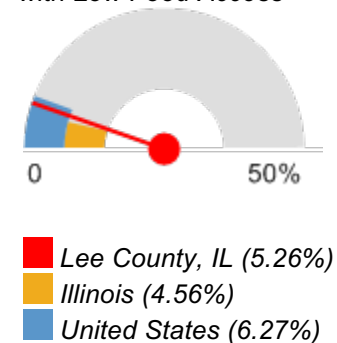


## **Food Access - Low Income Low Food Access**

Report Area	Total Population	Low Income Population with Low Food Access	Percent Low Income Population with Low Food Access
Lee County, IL	36,031	1,895	5.26%
Illinois	12,830,632	584,658	4.56%
United States	308,745,538	19,347,047	6.27%

Data Source: US Department of Agriculture, Economic Research Service, USDA - Food Access Research Atlas. 2010. Source geography: Tract

Percent Low Income Population with Low Food Access

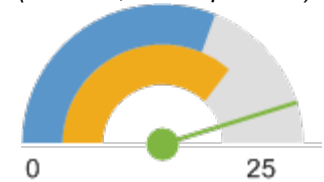


## **Food Access - WIC-Authorized Food Stores**

This indicator reports the number of food stores and other retail establishments per 100,000 population that are authorized to accept WIC Program (Special Supplemental Nutrition Program for Women, Infants, and Children) benefits and that carry designated WIC foods and food categories. This indicator is relevant because it provides a measure of food security and healthy food access for women and children in poverty as well as environmental influences on dietary behaviors.

Report Area	Total Population (2011 Estimate)	Number WIC-Authorized Food Stores	WIC-Authorized Food Store Rate (Per 100,000 Pop.)
Lee County, IL	35,467	8	22.6
Illinois	12,936,505	2,390	18.4
United States	318,921,538	50,042	15.6

WIC-Authorized Food Stores, Rate (Per 100,000 Population)



- Lee County, IL (22.6)
- Illinois (18.4)
- United States (15.6)

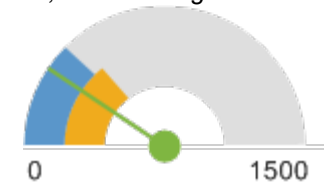
Data Source: US Department of Agriculture, Economic Research Service, USDA - Food Environment Atlas. 2011. Source geography: County

## **Housing - Assisted Housing**

This indicator reports the total number of HUD-funded assisted housing units available to eligible renters as well as the unit rate (per 10,000 total households).

Report Area	Total Housing Units (2010)	Total HUD-Assisted Housing Units	HUD-Assisted Units, Rate per 10,000 Housing Units
Lee County, IL	15,049	425	282.41
Illinois	5,296,715	229,819	433.89
United States	133,341,676	5,038,578	377.87

HUD-Assisted Units, Rate per 10,000 Housing Units



- Lee County, IL (282.41)
- Illinois (433.89)
- United States (377.87)

Data Source: US Department of Housing and Urban Development. 2015. Source geography: County

## **Housing - Housing Unit Age**

This indicator reports, for a given geographic area, the median year in which all housing units (vacant and occupied) were first constructed. The year the structure was built provides information on the age of housing units. These data help identify new housing construction and measures the disappearance of old housing from the inventory, when used in combination with data from previous years. This data also serves to aid in the development of formulas to determine substandard housing and provide assistance in forecasting future services, such as energy consumption and fire protection.

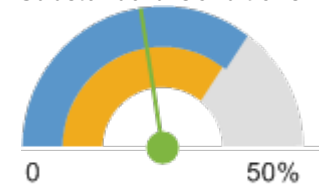
Report Area	Total Housing Units	Median Year Structures Built
Lee County, IL	15,057	1958
Illinois	5,299,433	1967
United States	132,741,032	1976

Data Source: US Census Bureau, American Community Survey. 2010-14. Source geography: Tract

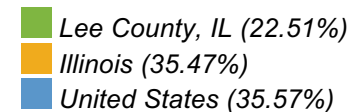
## **Housing - Substandard Housing**

This indicator reports the number and percentage of owner- and renter-occupied housing units having at least one of the following conditions: 1) lacking complete plumbing facilities, 2) lacking complete kitchen facilities, 3) with 1.01 or more occupants per room, 4) selected monthly owner costs as a percentage of household income greater than 30 percent, and 5) gross rent as a percentage of household income greater than 30 percent. Selected conditions provide information in assessing the quality of the housing inventory and its occupants. This data is used to easily identify homes where the quality of living and housing can be considered substandard.

Percent Occupied Housing Units with One or More Substandard Conditions



Report Area	Total Occupied Housing Units	Occupied Housing Units with One or More Substandard Conditions	Percent Occupied Housing Units with One or More Substandard Conditions
Lee County, IL	13,468	3,031	22.51%
Illinois	4,778,633	1,694,959	35.47%
United States	116,211,088	41,333,888	35.57%



Data Source: US Census Bureau, American Community Survey. 2010-14. Source geography: Tract

### **Substandard Housing: Households Lacking Complete Plumbing Facilities**

Complete plumbing facilities include: (a) hot and cold running water, (b) a flush toilet, and (c) a bathtub or shower. All three facilities must be located inside the house, apartment, or mobile home, but not necessarily in the same room. Housing units are classified as lacking complete plumbing facilities when any of the three facilities is not present.

<i>Report Area</i>	<i>Total Occupied Housing Units</i>	<i>Housing Units Lacking Complete Plumbing Facilities</i>	<i>Housing Units Lacking Complete Plumbing Facilities, Percent</i>
<i>Lee County, IL</i>	13,468	17	0.13%
<i>Illinois</i>	4,778,633	16,044	0.34%
<i>United States</i>	116,211,088	537,459	0.46%

### **Substandard Housing: Households Lacking Complete Kitchen Facilities**

A unit has complete kitchen facilities when it has all three of the following facilities: (a) a sink with a faucet, (b) a stove or range, and (c) a refrigerator. All kitchen facilities must be located in the house, apartment, or mobile home, but they need not be in the same room. A housing unit having only a microwave or portable heating equipment such as a hot plate or camping stove should not be considered as having complete kitchen facilities. An icebox is not considered to be a refrigerator.

<i>Report Area</i>	<i>Total Occupied Housing Units</i>	<i>Housing Units Lacking Complete Kitchen Facilities</i>	<i>Housing Units Lacking Complete Kitchen Facilities, Percent</i>
<i>Lee County, IL</i>	15,057	366	2.43%
<i>Illinois</i>	5,299,433	161,198	3.04%
<i>United States</i>	132,741,032	3,966,466	2.99%



### Substandard Housing: Households Lacking Telephone Service

A telephone must be in working order and service available in the house, apartment, or mobile home that allows the respondent to both make and receive calls. Households that have cell-phones (no land-line) are counted as having telephone service available. Households whose service has been discontinued for nonpayment or other reasons are not counted as having telephone service available.

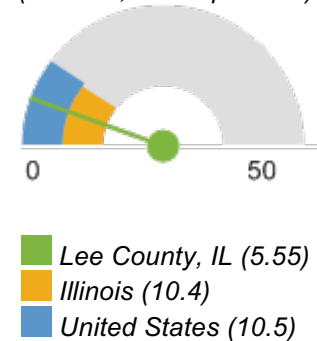
Report Area	Total Housing Units Lacking Telephone Service	Total Housing Units Lacking Telephone Service	Owner-Occupied Units Lacking Telephone Service	Owner-Occupied Units Lacking Telephone Service	Renter-Occupied Units Lacking Telephone Service	Renter-Occupied Units Lacking Telephone Service
Lee County, IL	393	2.92%	238	2.38%	155	4.46%
Illinois	111,164	2.33%	47,431	1.48%	63,733	4.02%
United States	2,875,544	2.47%	1,157,901	1.55%	1,717,643	4.15%

### Liquor Store Access

This indicator reports the number of beer, wine, and liquor stores per 100,000 population, as defined by North American Industry Classification System (NAICS) Code 445310. This indicator is relevant because it provides a measure of healthy food access and environmental influences on dietary behaviors.

Report Area	Total Population	Number of Establishments	Establishments, Rate per 100,000 Population
Lee County, IL	36,031	2	5.55
Illinois	12,830,632	1,340	10.4
United States	312,732,537	32,759	10.5

Liquor Stores, Rate (Per 100,000 Population)



Data Source: US Census Bureau, County Business Patterns. Additional data analysis by CARES. 2013. Source geography: County

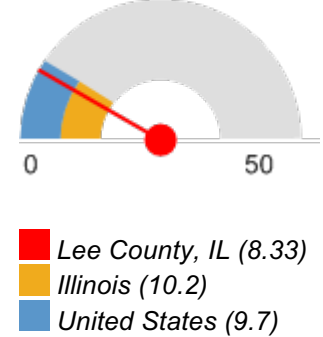
## Recreation and Fitness Facility Access

This indicator reports the number per 100,000 population of recreation and fitness facilities as defined by North American Industry Classification System (NAICS) Code 713940. This indicator is relevant because access to recreation and fitness facilities encourages physical activity and other healthy behaviors.

Report Area	Total Population	Number of Establishments	Establishments, Rate per 100,000 Population
Lee County, IL	36,031	3	8.33
Illinois	12,830,632	1,313	10.2
United States	312,732,537	30,393	9.7

Data Source: US Census Bureau, County Business Patterns. Additional data analysis by CARES. 2013. Source geography: County

Recreation and Fitness Facilities, Rate (Per 100,000 Population)



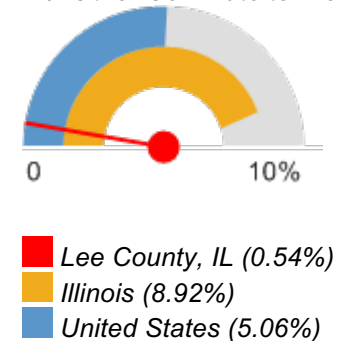
## Use of Public Transportation

This indicator reports the percentage of population using public transportation as their primary means of commute to work. Public transportation includes buses or trolley buses, streetcars or trolley cars, subway or elevated rails, and ferryboats.

Report Area	Total Population Employed Age 16	Population Using Public Transit for Commute to Work	Percent Population Using Public Transit for Commute to Work
Lee County, IL	15,463	84	0.54%
Illinois	5,928,078	528,753	8.92%
United States	141,337,152	7,157,671	5.06%

Data Source: US Census Bureau, American Community Survey. 2010-14. Source geography: Tract

Percent Population Using Public Transit for Commute to Work



## Clinical Care

A lack of access to care presents barriers to good health. The supply and accessibility of facilities and physicians, the rate of uninsurance, financial hardship, transportation barriers, cultural competency, and coverage limitations affect access.

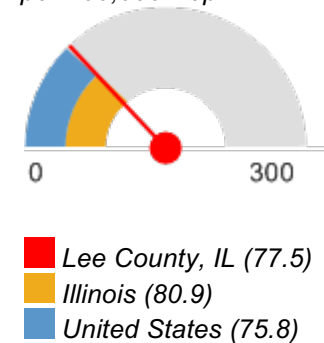
Rates of morbidity, mortality, and emergency hospitalizations can be reduced if community residents access services such as health screenings, routine tests, and vaccinations. Prevention indicators can call attention to a lack of access or knowledge regarding one or more health issues and can inform program interventions.

### Access to Primary Care

This indicator reports the number of primary care physicians per 100,000 population. Doctors classified as "primary care physicians" by the AMA include: General Family Medicine MDs and DOs, General Practice MDs and DOs, General Internal Medicine MDs and General Pediatrics MDs. Physicians age 75 and over and physicians practicing sub-specialties within the listed specialties are excluded. This indicator is relevant because a shortage of health professionals contributes to access and health status issues.

Report Area	Total Population, 2013	Primary Care Physicians, 2013	Primary Care Physicians, Rate per 100,000 Pop.
Lee County, IL	34,858	27	77.5
Illinois	12,882,135	10,428	80.9
United States	316,128,839	239,500	75.8

Primary Care Physicians, Rate per 100,000 Pop.



Data Source: US Department of Health Human Services, Health Resources and Services Administration, Area Health Resource File. 2013. Source geography: County

### **Access to Primary Care, Rate (Per 100,000 Pop.) by Year, 2003 through 2013**

This indicator reports the rate of primary care physicians per 100,000 population by year. This figure represents all primary care physicians practicing patient care, including hospital residents. In counties with teaching hospitals, this figure may differ from the rate reported above.

Report Area	2003	2004	2005	2006	2007	2008	2009	2010	2011	2012	2013
Lee County, IL	53.47	53.16	61.68	64.42	64.88	62.63	74.46	83.26	84.59	88.48	88.93
Illinois	88.94	89.76	89.24	89.07	89.11	88.95	91.45	94.59	95.99	95.72	97.33
United States	80.99	80.76	80.94	80.54	80.38	80.16	82.22	84.57	85.83	86.66	87.76

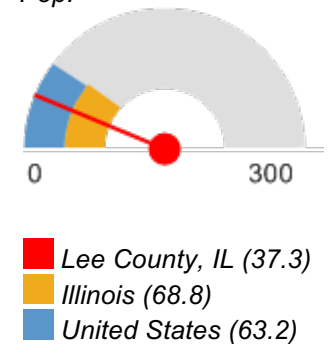
## Access to Dentists

This indicator reports the number of dentists per 100,000 population. This indicator includes all dentists - qualified as having a doctorate in dental surgery (D.D.S.) or dental medicine (D.M.D.), who are licensed by the state to practice dentistry and who are practicing within the scope of that license.

Report Area	Total Population, 2013	Dentists, 2013	Dentists, Rate per 100,000 Pop.
Lee County, IL	34,858	13	37.3
Illinois	12,882,135	8,865	68.8
United States	316,128,839	199,743	63.2

Data Source: US Department of Health Human Services, Health Resources and Services Administration, Area Health Resource File. 2013. Source geography: County

Dentists, Rate per 100,000 Pop.



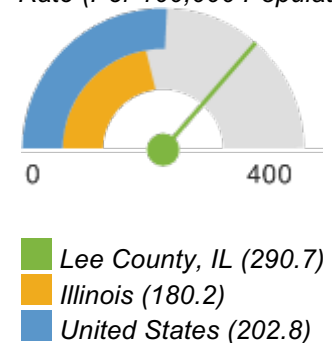
## Access to Mental Health Providers

This indicator reports the rate of the county population to the number of mental health providers including psychiatrists, psychologists, clinical social workers, and counselors that specialize in mental health care.

Report Area	Estimated Population	Number of Mental Health Providers	Ratio of Mental Health Providers to Population (1 Provider per x Persons)	Mental Health Care Provider Rate (Per 100,000 Population)
Lee County, IL	34,735	101	343.9	290.7
Illinois	12,806,917	23,090	554.7	180.2
United States	317,105,555	643,219	493	202.8

Data Source: University of Wisconsin Population Health Institute, County Health Rankings. 2016. Source geography: County

Mental Health Care Provider Rate (Per 100,000 Population)

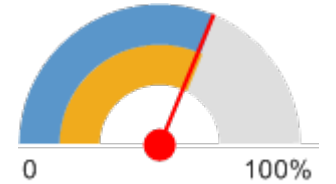


## Cancer Screening - Mammogram

This indicator reports the percentage of female Medicare enrollees, age 67-69, who have received one or more mammograms in the past two years. This indicator is relevant because engaging in early detection behaviors allows for earlier treatment of health problems. This indicator can also highlight a lack of access to preventive care, a lack of health knowledge, insufficient provider outreach, and/or social barriers preventing utilization of services.

Report Area	Total Medicare Enrollees	Female Medicare Enrollees Age 67-69	Female Medicare Enrollees with Mammogram in Past 2 Years	Percent Female Medicare Enrollees with Mammogram in Past 2 Year
Lee County, IL	5,175	431	270	62.6%
Illinois	1,331,041	109,345	70,469	64.4%
United States	53,131,712	4,402,782	2,772,990	63%

Percent Female Medicare Enrollees with Mammogram in Past 2 Year



- Lee County, IL (62.6%)
- Illinois (64.4%)
- United States (63%)

Data Source: Dartmouth College Institute for Health Policy Clinical Practice, Dartmouth Atlas of Health Care. 2012. Source geography: County

## Cancer Screening - Mammogram

Percent of Females 40+ Reporting Ever Having Had a Mammogram

Report Area	Percentage of Respondents Having Had a Mammogram	Percentage of Respondents Never Having Had a Mammogram
Lee County, IL	95.7%	4.3%
Illinois	92.2%	7.8%

Source: 2014 Lee County Round 5 Illinois County BRFS

## **Cancer Screening - Pap Test**

*This indicator reports the percentage of women aged 18 and older who self-report that they have ever had a Pap test. This indicator is relevant because engaging in preventive behaviors allows for early detection and treatment of health problems. This indicator can also highlight a lack of access to preventive care, a lack of health knowledge, insufficient provider outreach, and/or social barriers preventing utilization of services.*

<i>Report Area</i>	<i>Respondent Count</i>	<i>Percentage of Respondents Having Had Pap Test</i>	<i>Percentage of Respondents Not Having Had Pap Test</i>
<i>Lee County, IL</i>	<i>26,009</i>	<i>96.3%</i>	<i>3.7%</i>
<i>Illinois</i>	<i>4,761,645</i>	<i>89.2%</i>	<i>10.8%</i>

*Source: 2014 Lee County Round 5 Illinois County BRFS*

## **Cancer Screening - Sigmoidoscopy or Colonoscopy**

*This indicator reports the percentage of adults 50 and older who self-report that they have ever had a sigmoidoscopy or colonoscopy. This indicator is relevant because engaging in preventive behaviors allows for early detection and treatment of health problems. This indicator can also highlight a lack of access to preventive care, a lack of health knowledge, insufficient provider outreach, and/or social barriers preventing utilization of services.*

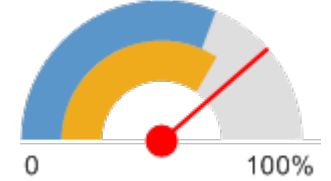
<i>Report Area</i>	<i>Respondent Count</i>	<i>Percentage of Respondents Ever Screened for Colon Cancer</i>	<i>Percentage of Respondents Never Screened for Colon Cancer</i>
<i>Lee County, IL</i>	<i>13,759</i>	<i>68.9%</i>	<i>31.1%</i>
<i>Illinois</i>	<i>4,238,235</i>	<i>65%</i>	<i>35%</i>

*Source: 2014 Lee County Round 5 Illinois County BRFS*

## HIV Screenings

This indicator reports the percentage of adults age 18-70 who self-report that they have never been screened for HIV. This indicator is relevant because engaging in preventive behaviors allows for early detection and treatment of health problems. This indicator can also highlight a lack of access to preventive care, a lack of health knowledge, insufficient provider outreach, and/or social barriers preventing utilization of services.

Percent Adults Never Screened for HIV / AIDS



- Lee County, IL (77.02%)
- Illinois (68.86%)
- United States (62.79%)

Report Area	Survey Population (Adults Age 18 )	Total Adults Never Screened for HIV / AIDS	Percent Adults Never Screened for HIV / AIDS
Lee County, IL	23,924	18,427	77.02%
Illinois	9,215,764	6,345,570	68.86%
United States	214,984,421	134,999,025	62.79%

Data Source: Centers for Disease Control and Prevention, Behavioral Risk Factor Surveillance System. Additional data analysis by CARES. 2011-12. Source geography: County

## Flu & Pneumonia Vaccination

These indicators report the percentage of adults self-report that they have received influenza vaccine in the past year and ever received a pneumonia vaccination. This indicator is relevant because engaging in preventive behaviors decreases the likelihood of developing future health problems. This indicator can also highlight a lack of access to preventive care, a lack of health knowledge, insufficient provider outreach, and/or social barriers preventing utilization of services.

2014 Lee County Round 5 Illinois County BRFSS		Count	Col %
HAD FLU SHOT PAST 12 MONTHS	Yes	8,293	30.3%
	No	19,118	69.7%
<b>Total</b>		<b>27,411</b>	<b>100.0%</b>
EVER HAD PNEUMONIA VACCINATION	Yes	7,678	29.5%
	No	18,313	70.5%
<b>Total</b>		<b>25,990</b>	<b>100.0%</b>

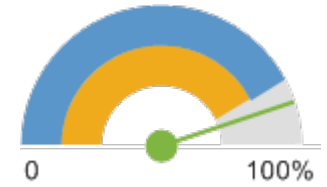
2014 Illinois BRFS		Count	Col %
HAD FLU SHOT PAST 12 MONTHS	Yes	3,576,567	38.5%
	No	5,722,446	61.5%
<b>Total</b>		<b>9,299,013</b>	<b>100.0%</b>
EVER HAD PNEUMONIA VACCINATION	Yes	2,566,538	29.2%
	No	6,225,763	70.8%

Source: 2014 Lee County Round 5 Illinois County BRFSS

## **Diabetes Management - Hemoglobin A1c Test**

This indicator reports the percentage of diabetic Medicare patients who have had a hemoglobin A1c (hA1c) test, a blood test which measures blood sugar levels, administered by a health care professional in the past year. In the report area, 587 Medicare enrollees with diabetes have had an annual exam out of 654 Medicare enrollees in the report area with diabetes, or 89.8%. This indicator is relevant because engaging in preventive behaviors allows for early detection and treatment of health problems. This indicator can also highlight a lack of access to preventive care, a lack of health knowledge, insufficient provider outreach, and/or social barriers preventing utilization of services.

Percent Medicare Enrollees with Diabetes with Annual Exam



- Lee County, IL (89.8%)
- Illinois (84.8%)
- United States (84.6%)

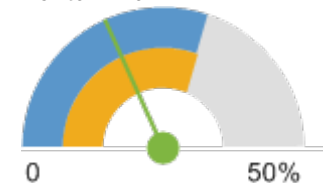
Report Area	Total Medicare Enrollees	Medicare Enrollees with Diabetes	Medicare Enrollees with Diabetes with Annual Exam	Percent Medicare Enrollees with Diabetes with Annual Exam
Lee County, IL	5,175	654	587	89.8%
Illinois	1,331,041	163,043	138,332	84.8%
United States	53,131,712	6,517,150	5,511,632	84.6%

Data Source: Dartmouth College Institute for Health Policy Clinical Practice, Dartmouth Atlas of Health Care. 2012. Source geography: County

## **Dental Care Utilization**

This indicator reports the percentage of adults aged 18 and older who self-report that they have not visited a dentist, dental hygienist or dental clinic within the past year. This indicator is relevant because engaging in preventive behaviors decreases the likelihood of developing future health problems. This indicator can also highlight a lack of access to preventive care, a lack of health knowledge, insufficient provider outreach, and/or social barriers preventing utilization of services.

Percent Adults Without Recent Dental Exam



- Lee County, IL (18.2%)
- Illinois (30.9%)
- United States (30.2%)

Report Area	Total Population (Age 18 )	Total Adults Without Recent Dental Exam	Percent Adults with No Dental Exam
Lee County, IL	28,102	5,113	18.2%
Illinois	9,654,603	2,981,670	30.9%
United States	235,375,690	70,965,788	30.2%

Data Source: Centers for Disease Control and Prevention, Behavioral Risk Factor Surveillance System. Additional data analysis by CARES. 2006-10. Source geography: County

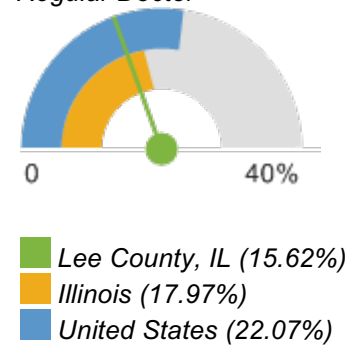


## Lack of a Consistent Source of Primary Care

This indicator reports the percentage of adults aged 18 and older who self-report that they do not have at least one person who they think of as their personal doctor or health care provider. This indicator is relevant because access to regular primary care is important to preventing major health issues and emergency department visits.

Report Area	Survey Population (Adults Age 18 )	Total Adults Without Any Regular Doctor	Percent Adults Without Any Regular Doctor
Lee County, IL	24,391	3,809	15.62%
Illinois	9,702,848	1,743,367	17.97%
United States	236,884,668	52,290,932	22.07%

Percent Adults Without Any Regular Doctor



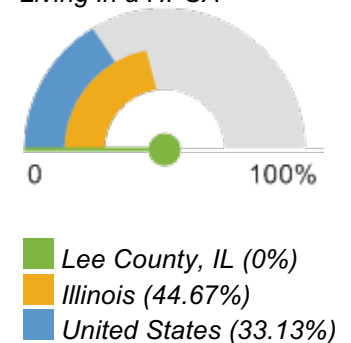
Data Source: Centers for Disease Control and Prevention, Behavioral Risk Factor Surveillance System. Additional data analysis by CARES. 2011-12. Source geography: County

## Population Living in a Health Professional Shortage Area

This indicator reports the percentage of the population that is living in a geographic area designated as a "Health Professional Shortage Area" (HPSA), defined as having a shortage of primary medical care, dental or mental health professionals. This indicator is relevant because a shortage of health professionals contributes to access and health status issues.

Report Area	Total Area Population	Population Living in a HPSA	Percentage of Population Living in a HPSA
Lee County, IL	36,031	0	0%
Illinois	12,830,632	5,731,457	44.67%
United States	308,745,538	102,289,607	33.13%

Percentage of Population Living in a HPSA



Data Source: US Department of Health Human Services, Health Resources and Services Administration, Health Resources and Services Administration. April 2016. Source geography: HPSA

## Health Behaviors

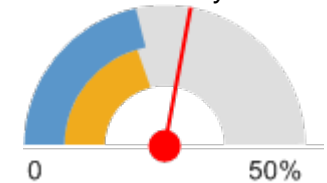
Health behaviors such as poor diet, a lack of exercise, and substance abuse contribute to poor health status.

### Physical Inactivity

Within the report area, 7,918 or 27.9% of adults aged 20 and older self-report no leisure time for activity, based on the question: "During the past month, other than your regular job, did you participate in any physical activities or exercises such as running, calisthenics, golf, gardening, or walking for exercise?". This indicator is relevant because current behaviors are determinants of future health and this indicator may illustrate a cause of significant health issues, such as obesity and poor cardiovascular health.

Report Area	Total Population Age 20	Population with no Leisure Time Physical Activity	Percent Population with no Leisure Time Physical Activity
Lee County, IL	26,841	7,918	27.9%
Illinois	9,516,375	2,020,399	20.8%
United States	468,415,238	104,295,786	21.8%

Percent Population with no Leisure Time Physical Activity



- Lee County, IL (27.9%)
- Illinois (20.8%)
- United States (21.8%)

Data Source: Centers for Disease Control and Prevention, National Center for Chronic Disease Prevention and Health Promotion. 2013. Source geography: County

### **Percent Adults Physically Inactive by Year, 2004 through 2012**

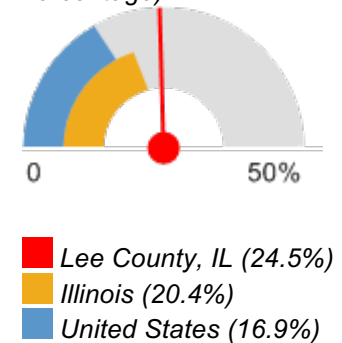
Report Area	2004	2005	2006	2007	2008	2009	2010	2011	2012	2013
Lee County, IL	26%	24%	23.1%	22.9%	25.5%	27.2%	25.4%	24.2%	27.9%	27.9%
Illinois	23.2%	22.44%	22.11%	23.07%	23.66%	24.48%	23.42%	22.56%	21.85%	20.8%
United States	22.96%	22.82%	22.93%	23.2%	23.51%	23.67%	23.41%	22.47%	22.64%	21.75%

## Alcohol Consumption

This indicator reports the percentage of adults aged 18 and older who self-report heavy alcohol consumption (defined as more than two drinks per day on average for men and one drink per day on average for women). This indicator is relevant because current behaviors are determinants of future health and this indicator may illustrate a cause of significant health issues, such as cirrhosis, cancers, and untreated mental and behavioral health needs.

Report Area	Total Population Age 18	Estimated Adults Drinking Excessively	Estimated Adults Drinking Excessively (Crude Percentage)	Estimated Adults Drinking Excessively (Age-Adjusted Percentage)
Lee County, IL	28,147	6,812	24.2%	24.5%
Illinois	9,654,603	1,930,921	20%	20.4%
United States	232,556,016	38,248,349	16.4%	16.9%

Estimated Adults Drinking Excessively (Age-Adjusted Percentage)



Data Source: Centers for Disease Control and Prevention, Behavioral Risk Factor Surveillance System. Accessed via the Health Indicators Warehouse. US Department of Health Human Services, Health Indicators Warehouse. 2006-12. Source geography: County

## **Tobacco Usage - Current Smokers**

In the report area, 22.3% of adults age 18 or older self-report currently smoking cigarettes some days or every day. This indicator is relevant because tobacco use is linked to leading causes of death such as cancer and cardiovascular disease.

Report Area	Percent Population Smoking Cigarettes
Lee County, IL	22.3%
Illinois	16.7%

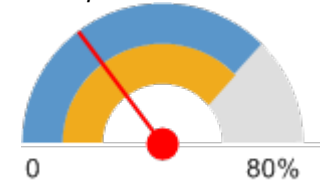
Source: 2014 Lee County Round 5 Illinois County BRFSS

## **Tobacco Usage - Quit Attempt**

An estimated 23.55% of adult smokers in the report area attempted to quit smoking for at least 1 day in the past year. This indicator is relevant because tobacco use is linked to leading causes of death such as cancer and cardiovascular disease and supporting efforts to quit smoking may increase positive health outcomes.

Report Area	Survey Population (Smokers Age 18 )	Total Smokers with Quit Attempt in Past 12 Months	Percent Smokers with Quit Attempt in Past 12 Months
Lee County, IL	4,050	954	23.55%
Illinois	1,903,115	1,164,973	61.21%
United States	45,526,654	27,323,073	60.02%

Percent Smokers with Quit Attempt in Past 12 Months



■ Lee County, IL (23.55%)  
■ Illinois (61.21%)  
■ United States (60.02%)

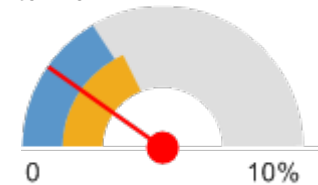
Data Source: Centers for Disease Control and Prevention, Behavioral Risk Factor Surveillance System. Additional data analysis by CARES. 2011-12. Source geography: County

## **Walking or Biking to Work**

This indicator reports the percentage of the population that commutes to work by either walking or riding a bicycle.

Report Area	Population Age 16	Population Walking or Biking to Work	Percentage Walking or Biking to Work
Lee County, IL	15,463	302	1.95%
Illinois	5,928,078	222,032	3.75%
United States	141,337,152	4,764,868	3.37%

Percentage Walking or Biking to Work



■ Lee County, IL (1.95%)  
■ Illinois (3.75%)  
■ United States (3.37%)

Data Source: US Census Bureau, American Community Survey. 2010-14. Source geography: Tract

## Health Outcomes

Measuring morbidity and mortality rates allows assessing linkages between social determinants of health and outcomes. By comparing, for example, the prevalence of certain chronic diseases to indicators in other categories (e.g., poor diet and exercise) with outcomes (e.g., high rates of obesity and diabetes), various causal relationship may emerge, allowing a better understanding of how certain community health needs may be addressed.

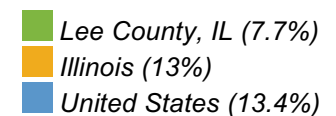
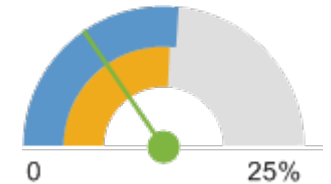
### Asthma Prevalence

This indicator reports the percentage of adults aged 18 and older who self-report that they have ever been told by a doctor, nurse, or other health professional that they had asthma. This indicator is relevant because asthma is a prevalent problem in the U.S. that is often exacerbated by poor environmental conditions.

Report Area	Survey Population (Adults Age 18 )	Total Adults with Asthma	Percent Adults with Asthma
Lee County, IL	24,391	1,886	7.7%
Illinois	9,701,927	1,265,744	13%
United States	237,197,465	31,697,608	13.4%

Data Source: Centers for Disease Control and Prevention, Behavioral Risk Factor Surveillance System. Additional data analysis by CARES. 2011-12. Source geography: County

Percent Adults with Asthma



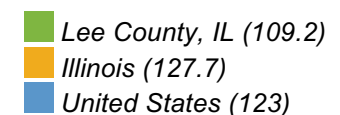
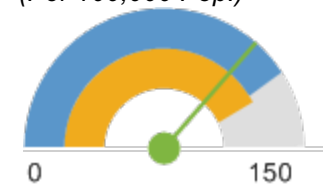
### Cancer Incidence - Breast

This indicator reports the age adjusted incidence rate (cases per 100,000 population per year) of females with breast cancer adjusted to 2000 U.S. standard population age groups (Under Age 1, 1-4, 5-9, ..., 80-84, 85 and older). This indicator is relevant because cancer is a leading cause of death and it is important to identify cancers separately to better target interventions.

Report Area	Estimated Total Population (Female)	New Cases (Annual Average)	Cancer Incidence Rate (Per 100,000 Pop.)
Lee County, IL	2,197	24	109.2
Illinois	732,106	9,349	127.7
United States	17,902,845	220,205	123

Data Source: State Cancer Profiles. 2008-12. Source geography: County

Annual Breast Cancer Incidence Rate (Per 100,000 Pop.)



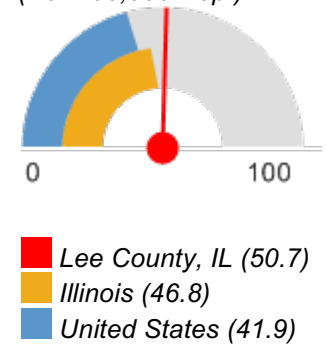
## **Cancer Incidence - Colon and Rectum**

This indicator reports the age adjusted incidence rate (cases per 100,000 population per year) of colon and rectum cancer adjusted to 2000 U.S. standard population age groups (Under age 1, 1-4, 5-9, ..., 80-84, 85 and older). This indicator is relevant because cancer is a leading cause of death and it is important to identify cancers separately to better target interventions.

Report Area	Estimated Total Population	New Cases (Annual Average)	Cancer Incidence Rate (Per 100,000 Pop.)
Lee County, IL	4,536	23	50.7
Illinois	1,359,829	6,364	46.8
United States	33,516,229	140,433	41.9
<a href="#">HP 2020 Target</a>			<= 38.7

Data Source: State Cancer Profiles. 2008-12. Source geography: County

Annual Colon and Rectum Cancer Incidence Rate (Per 100,000 Pop.)



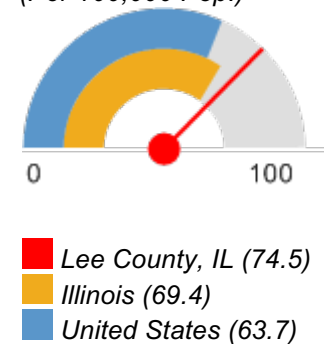
## **Cancer Incidence - Lung**

This indicator reports the age adjusted incidence rate (cases per 100,000 population per year) of colon and rectum cancer adjusted to 2000 U.S. standard population age groups (Under age 1, 1-4, 5-9, ..., 80-84, 85 and older). This indicator is relevant because cancer is a leading cause of death and it is important to identify cancers separately to better target interventions.

Report Area	Estimated Total Population	New Cases (Annual Average)	Cancer Incidence Rate (Per 100,000 Pop.)
Lee County, IL	4,563	34	74.5
Illinois	1,346,397	9,344	69.4
United States	33,565,463	213,812	63.7

Data Source: State Cancer Profiles. 2008-12. Source geography: County

Annual Lung Cancer Incidence Rate (Per 100,000 Pop.)



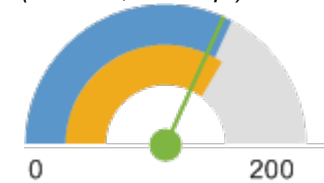
## **Cancer Incidence - Prostate**

This indicator reports the age adjusted incidence rate (cases per 100,000 population per year) of males with prostate cancer adjusted to 2000 U.S. standard population age groups (Under age 1, 1-4, 5-9, ..., 80-84, 85 and older). This indicator is relevant because cancer is a leading cause of death and it is important to identify cancers separately to better target interventions.

Report Area	Estimated Total Population (Male)	New Cases (Annual Average)	Cancer Incidence Rate (Per 100,000 Pop.)
Lee County, IL	2,281	29	127.1
Illinois	631,965	8,778	138.9
United States	15,967,881	210,297	131.7

Data Source: State Cancer Profiles. 2008-12. Source geography: County

Annual Prostate Cancer Incidence Rate (Per 100,000 Pop.)



- Lee County, IL (127.1)
- Illinois (138.9)
- United States (131.7)

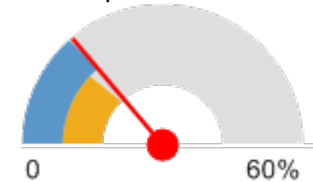
## **Depression (Medicare Population)**

This indicator reports the percentage of the Medicare fee-for-service population with depression.

Report Area	Total Medicare Beneficiaries	Beneficiaries with Depression	Percent with Depression
Lee County, IL	5,855	974	16.6%
Illinois	1,476,750	219,269	14.8%
United States	34,096,898	5,537,063	16.2%

Data Source: Centers for Medicare and Medicaid Services. 2014. Source geography: County

Percentage of Medicare Beneficiaries with Depression



- Lee County, IL (16.6%)
- Illinois (14.8%)
- United States (16.2%)

## Percentage of Medicare Population with Depression by Year, 2010 through 2014

This indicator reports the percentage trend of the Medicare fee-for-service population with depression over time.

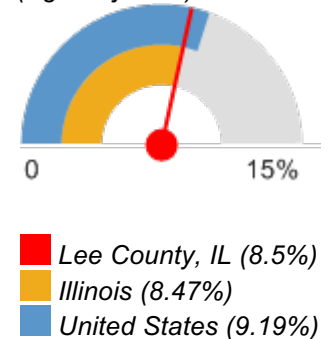
Report Area	Percent 2010	Percent 2011	Percent 2012	Percent 2013	Percent 2014
Lee County, IL	14.57%	15.19%	15.14%	15.57%	16.64%
Illinois	13.38%	14.30%	14.77%	15.10%	14.85%
United States	13.97%	15.02%	15.50%	15.87%	16.24%

## Diabetes (Adult)

This indicator reports the percentage of adults aged 20 and older who have ever been told by a doctor that they have diabetes. This indicator is relevant because diabetes is a prevalent problem in the U.S.; it may indicate an unhealthy lifestyle and puts individuals at risk for further health issues.

Report Area	Total Population Age 20	Population with Diagnosed Diabetes	Population with Diagnosed Diabetes, Crude Rate	Population with Diagnosed Diabetes, Age-Adjusted Rate
Lee County, IL	26,782	2,705	10.1	8.5%
Illinois	9,507,158	864,658	9.09	8.47%
United States	473,839,016	47,370,834	10	9.19%

Percent Adults with Diagnosed Diabetes (Age-Adjusted)



Data Source: Centers for Disease Control and Prevention, National Center for Chronic Disease Prevention and Health Promotion. 2013. Source geography: County

## Percent Adults with Diagnosed Diabetes by Year, 2004 through 2012

Report Area	2004	2005	2006	2007	2008	2009	2010	2011
Lee County, IL	6.6%	7.1%	7.6%	7.9%	7.8%	8.5%	8.9%	9%
Illinois	6.88%	7.14%	7.94%	8.08%	8.16%	8.24%	8.6%	8.73%
United States	7.31%	7.58%	8.04%	8.33%	8.55%	8.72%	8.95%	9.09%



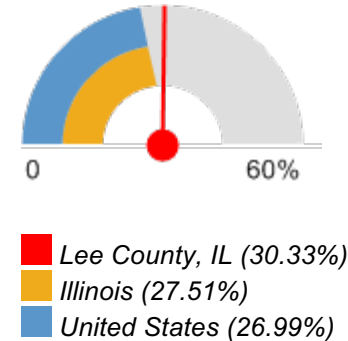
## **Heart Disease (Medicare Population)**

This indicator reports the percentage of the Medicare fee-for-service population with ischaemic heart disease.

Report Area	Total Medicare Beneficiaries	Beneficiaries with Heart Disease	Percent with Heart Disease
Lee County, IL	5,855	1,776	30.33%
Illinois	1,476,750	406,241	27.51%
United States	34,096,898	9,202,548	26.99%

Data Source: Centers for Medicare and Medicaid Services. 2014. Source geography: County

Percentage of Medicare Beneficiaries with Heart Disease



## **Percentage of Medicare Population with Heart Disease by Year, 2010 through 2014**

This indicator reports the percentage trend of the Medicare fee-for-service population with ischaemic heart disease over time..

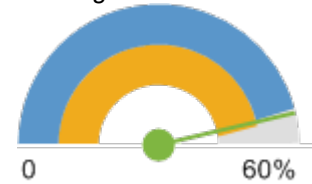
Report Area	Percent 2010	Percent 2011	Percent 2012	Percent 2013	Percent 2014
Lee County, IL	31.23%	31.61%	31.60%	31.65%	30.33%
Illinois	30.41%	29.72%	29.02%	28.22%	27.51%
United States	29.99%	29.33%	28.61%	27.77%	26.99%

## **High Blood Pressure (Medicare Population)**

This indicator reports the percentage of the Medicare fee-for-service population with hypertension (high blood pressure).

Report Area	Total Medicare Beneficiaries	Beneficiaries with High Blood Pressure	Percent with High Blood Pressure
Lee County, IL	5,855	3,253	55.56%
Illinois	1,476,750	837,638	56.72%
United States	34,096,898	18,775,968	55.07%

Percentage of Medicare Beneficiaries with High Blood Pressure



■ Lee County, IL (55.56%)  
■ Illinois (56.72%)  
■ United States (55.07%)

Data Source: Centers for Medicare and Medicaid Services. 2014. Source geography: County

## **Percentage of Medicare Population with High Blood Pressure by Year, 2010 through 2014**

This indicator reports the percentage trend of the Medicare fee-for-service population with hypertension (high blood pressure) over time..

Report Area	Percent 2010	Percent 2011	Percent 2012	Percent 2013	Percent 2014
Lee County, IL	58.16%	57.25%	57.28%	57.47%	55.56%
Illinois	57.59%	57.70%	57.67%	57.64%	56.72%
United States	55.81%	55.73%	55.60%	55.55%	55.07%

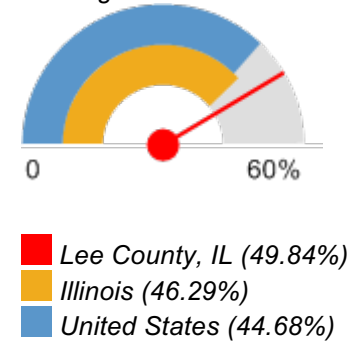
## **High Cholesterol (Medicare Population)**

This indicator reports the percentage of the Medicare fee-for-service population with hyperlipidemia, which is typically associated with high cholesterol.

Report Area	Total Medicare Beneficiaries	Beneficiaries with High Cholesterol	Percent with High Cholesterol
Lee County, IL	5,855	2,918	49.84%
Illinois	1,476,750	683,645	46.29%
United States	34,096,898	15,234,051	44.68%

Data Source: Centers for Medicare and Medicaid Services. 2014. Source geography: County

Percentage of Medicare Beneficiaries with High Cholesterol



## **Percentage of Medicare Population with High Cholesterol by Year, 2010 through 2014**

This indicator reports the percentage trend of the Medicare fee-for-service population with hyperlipidemia (high cholesterol) over time.

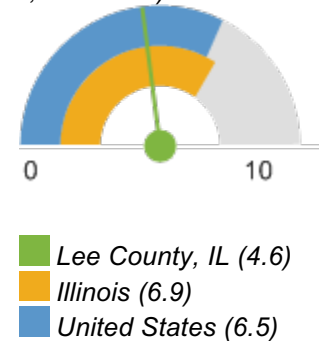
Report Area	Percent 2010	Percent 2011	Percent 2012	Percent 2013	Percent 2014
Lee County, IL	49.88%	51.65%	51.88%	51.96%	49.84%
Illinois	44.70%	46.05%	46.52%	46.89%	46.29%
United States	43.80%	44.71%	44.85%	45.01%	44.68%

## **Infant Mortality**

This indicator reports the rate of deaths to infants less than one year of age per 1,000 births. This indicator is relevant because high rates of infant mortality indicate the existence of broader issues pertaining to access to care and maternal and child health.

Report Area	Total Births	Total Infant Deaths	Infant Mortality Rate (Per 1,000 Births)
Lee County, IL	1,925	9	4.6
Illinois	879,035	6,065	6.9
United States	20,913,535	136,369	6.5
<a href="#">HP 2020 Target</a>			<= 6.0

Infant Mortality Rate (Per 1,000 Births)



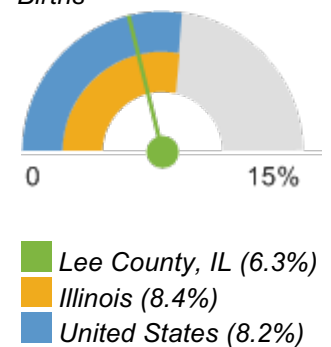
Data Source: US Department of Health Human Services, Health Resources and Services Administration, Area Health Resource File. 2006-10. Source geography: County

## **Low Birth Weight**

This indicator reports the percentage of total births that are low birth weight (Under 2500g). This indicator is relevant because low birth weight infants are at high risk for health problems. This indicator can also highlight the existence of health disparities.

Report Area	Total Live Births	Low Weight Births (Under 2500g)	Low Weight Births, Percent of Total
Lee County, IL	2,716	171	6.3%
Illinois	1,251,656	105,139	8.4%
United States	29,300,495	2,402,641	8.2%
<a href="#">HP 2020 Target</a>			<= 7.8%

Percent Low Birth Weight Births



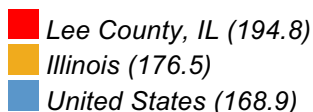
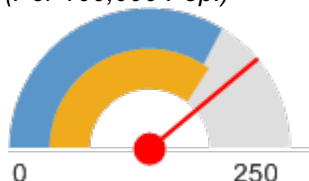
Data Source: US Department of Health Human Services, Health Indicators Warehouse. Centers for Disease Control and Prevention, National Vital Statistics System. Accessed via CDC WONDER. 2006-12. Source geography: County

## Babies Born with Low Birth Weight, Percent by Time Period, 2002-2008 through 2006-2012

Report Area	2002-2008	2003-2009	2004-2010	2005-2011	2006-2012
Lee County, IL	6.6%	6.8%	6.8%	6.5%	6.3%
Illinois	8.4%	8.4%	8.4%	8.4%	8.4%
United States	8.1%	8.1%	8.2%	8.2%	8.2%

## Mortality - Cancer

Cancer Mortality, Age-Adjusted Death Rate  
(Per 100,000 Pop.)

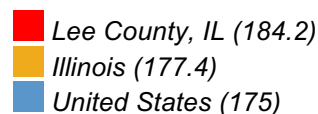
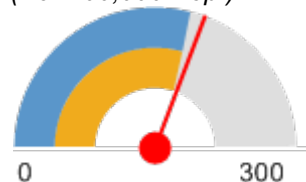


## Mortality - Heart Disease

Within the report area the rate of death due to coronary heart disease per 100,000 population is 184.2. Figures are reported as crude rates, and as rates age-adjusted to year 2000 standard. Rates are resummarized for report areas from county level data, only where data is available. This indicator is relevant because heart disease is a leading cause of death in the United States.

Report Area	Total Population	Average Annual Deaths, 2007-2011	Crude Death Rate (Per 100,000 Pop.)	Age-Adjusted Death Rate (Per 100,000 Pop.)
Lee County, IL	35,516	88	248.34	184.2
Illinois	12,850,811	24,877	193.58	177.4
United States	311,430,373	600,899	192.95	175

Heart Disease Mortality, Age-Adjusted Death Rate  
(Per 100,000 Pop.)



Data Source: Centers for Disease Control and Prevention, National Vital Statistics System. Accessed via CDC WONDER. 2009-13. Source geography: County

## Heart Disease Mortality, Age-Adjusted Rate (Per 100,000 Pop.) by Gender

Report Area	Male	Female
Lee County, IL	246.2	130.9
Illinois	225.8	140.1
United States	220.1	139.6

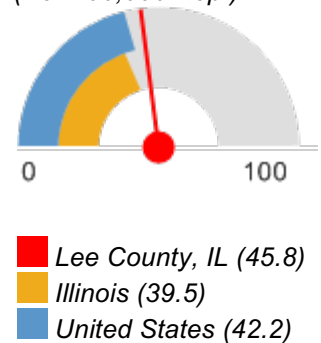
## Mortality - Lung Disease

This indicator reports the rate of death due to chronic lower respiratory disease per 100,000 population. Figures are reported as crude rates, and as rates age-adjusted to year 2000 standard. Rates are resummarized for report areas from county level data, only where data is available. This indicator is relevant because lung disease is a leading cause of death in the United States.

Report Area	Total Population	Average Annual Deaths, 2007-2011	Crude Death Rate (Per 100,000 Pop.)	Age-Adjusted Death Rate (Per 100,000 Pop.)
Lee County, IL	35,516	21	60.25	45.8
Illinois	12,850,811	5,353	41.65	39.5
United States	311,430,373	142,214	45.66	42.2

Data Source: Centers for Disease Control and Prevention, National Vital Statistics System. Accessed via CDC WONDER. 2009-13. Source geography: County

Lung Disease Mortality, Age-Adjusted Death Rate (Per 100,000 Pop.)

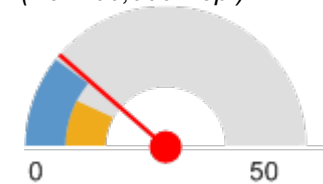


## Mortality - Motor Vehicle Accident

This indicator reports the rate of death due to motor vehicle crashes per 100,000 population, which include collisions with another motor vehicle, a nonmotorist, a fixed object, and a non-fixed object, an overturn, and any other non-collision. This indicator is relevant because motor vehicle crash deaths are preventable and they are a cause of premature death.

Report Area	Total Population	Average Annual Deaths, 2007-2011	Crude Death Rate (Per 100,000 Pop.)	Age-Adjusted Death Rate (Per 100,000 Pop.)
Lee County, IL	35,516	4	11.8	11.4
Illinois	12,850,811	1,020	7.9	7.8
United States	311,430,373	34,139	11	10.8

Motor Vehicle Crash Death, Age-Adjusted Death Rate (Per 100,000 Pop.)



- Lee County, IL (11.4)
- Illinois (7.8)
- United States (10.8)

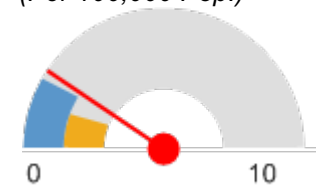
Data Source: Centers for Disease Control and Prevention, National Vital Statistics System. Accessed via CDC WONDER. 2009-13. Source geography: County

## Mortality - Pedestrian Accident

This indicator reports the crude rate of pedestrians killed by motor vehicles per 100,000 population. This indicator is relevant because pedestrian-motor vehicle crash deaths are preventable and they are a cause of premature death.

Report Area	Total Population (2010)	Total Pedestrian Deaths, 2011-2013	Average Annual Deaths, Rate per 100,000 Pop.
Lee County, IL	36,031	2	1.9
Illinois	12,830,632	449	1.2
United States	312,732,537	15,591	1.7
<a href="#">HP 2020 Target</a>			<= 1.3

Pedestrian Motor Vehicle Mortality, Age-Adjusted Death Rate (Per 100,000 Pop.)



- Lee County, IL (1.9)
- Illinois (1.2)
- United States (1.7)

Data Source: US Department of Transportation, National Highway Traffic Safety Administration, Fatality Analysis Reporting System. 2011-13. Source geography: County

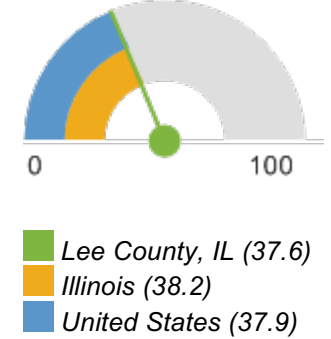
## **Mortality - Stroke**

Within the report area there are an estimated 37.6 deaths due to cerebrovascular disease (stroke) per 100,000 population. This is greater than than the Healthy People 2020 target of less than or equal to 33.8. Figures are reported as crude rates, and as rates age-adjusted to year 2000 standard. Rates are resummarized for report areas from county level data, only where data is available. This indicator is relevant because stroke is a leading cause of death in the United States.

Report Area	Total Population	Average Annual Deaths, 2007-2011	Crude Death Rate (Per 100,000 Pop.)	Age-Adjusted Death Rate (Per 100,000 Pop.)
Lee County, IL	35,516	18	51.2	37.6
Illinois	12,850,811	5,322	41.4	38.2
United States	311,430,373	128,955	41.4	37.9
<a href="#">HP 2020 Target</a>				<= 33.8

Data Source: Centers for Disease Control and Prevention, National Vital Statistics System. Accessed via CDC WONDER. 2009-13. Source geography: County

Stroke Mortality, Age-Adjusted Death Rate (Per 100,000 Pop.)



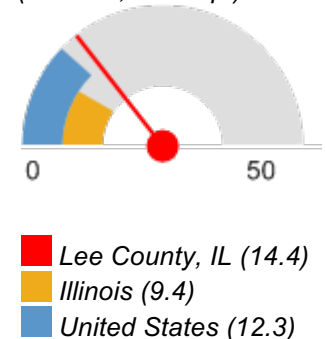
## **Mortality - Suicide**

This indicator reports the rate of death due to intentional self-harm (suicide) per 100,000 population. Figures are reported as crude rates, and as rates age-adjusted to year 2000 standard. Rates are resummarized for report areas from county level data, only where data is available. This indicator is relevant because suicide is an indicator of poor mental health.

Report Area	Total Population	Average Annual Deaths, 2007-2011	Crude Death Rate (Per 100,000 Pop.)	Age-Adjusted Death Rate (Per 100,000 Pop.)
Lee County, IL	35,516	5	14.6	14.4
Illinois	12,850,811	1,239	9.6	9.4
United States	311,430,373	39,308	12.6	12.3
<a href="#">HP 2020 Target</a>				<= 10.2

Data Source: Centers for Disease Control and Prevention, National Vital Statistics System. Accessed via CDC WONDER. 2009-13. Source geography: County

Suicide, Age-Adjusted Death Rate (Per 100,000 Pop.)



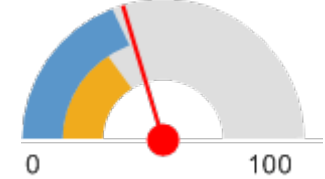


## **Mortality - Unintentional Injury**

This indicator reports the rate of death due to unintentional injury (accident) per 100,000 population. Figures are reported as crude rates, and as rates age-adjusted to year 2000 standard. Rates are resummarized for report areas from county level data, only where data is available. This indicator is relevant because accidents are a leading cause of death in the U.S.

Unintentional Injury (Accident) Mortality, Age-Adjusted Death Rate (Per 100,000 Pop.)

Report Area	Total Population	Average Annual Deaths, 2007-2011	Crude Death Rate (Per 100,000 Pop.)	Age-Adjusted Death Rate (Per 100,000 Pop.)
Lee County, IL	35,516	16	46.18	40.6
Illinois	12,850,811	4,225	32.87	31.9
United States	311,430,373	124,733	40.05	38.6
<a href="#">HP 2020 Target</a>				<= 36.0



Lee County, IL (40.6)  
Illinois (31.9)  
United States (38.6)

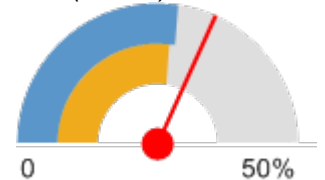
Data Source: Centers for Disease Control and Prevention, National Vital Statistics System. Accessed via CDC WONDER. 2009-13. Source geography: County

## **Obesity**

31.9% of adults aged 20 and older self-report that they have a Body Mass Index (BMI) greater than 30.0 (obese) in the report area. Excess weight may indicate an unhealthy lifestyle and puts individuals at risk for further health issues.

Report Area	Total Population Age 20	Adults with BMI > 30.0 (Obese)	Percent Adults with BMI > 30.0 (Obese)
Lee County, IL	26,874	8,761	31.9%
Illinois	9,511,847	2,600,939	27%
United States	468,376,406	129,769,830	27.5%

Percent Adults with BMI > 30.0 (Obese)



Lee County, IL (31.9%)  
Illinois (27%)  
United States (27.5%)

Data Source: Centers for Disease Control and Prevention, National Center for Chronic Disease Prevention and Health Promotion. 2013. Source geography: County

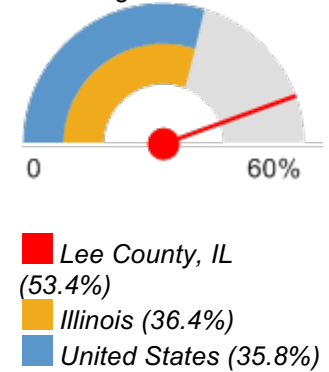
## Overweight

53.4% of adults aged 18 and older self-report that they have a Body Mass Index (BMI) between 25.0 and 30.0 (overweight) in the report area. Excess weight may indicate an unhealthy lifestyle and puts individuals at risk for further health issues.

Report Area	Survey Population (Adults Age 18 )	Total Adults Overweight	Percent Adults Overweight
Lee County, IL	24,392	13,014	53.4%
Illinois	9,476,490	3,448,247	36.4%
United States	224,991,207	80,499,532	35.8%

Data Source: Centers for Disease Control and Prevention, Behavioral Risk Factor Surveillance System. Additional data analysis by CARES. 2011-12. Source geography: County

Percent Adults Overweight



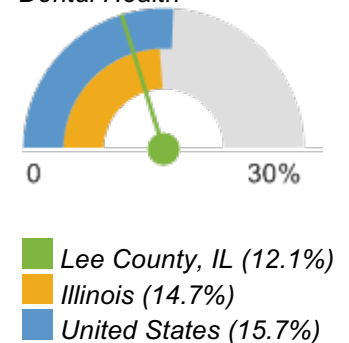
## Poor Dental Health

This indicator reports the percentage of adults age 18 and older who self-report that six or more of their permanent teeth have been removed due to tooth decay, gum disease, or infection. This indicator is relevant because it indicates lack of access to dental care and/or social barriers to utilization of dental services.

Report Area	Total Population (Age 18 )	Total Adults with Poor Dental Health	Percent Adults with Poor Dental Health
Lee County, IL	28,102	3,392	12.1%
Illinois	9,654,603	1,418,280	14.7%
United States	235,375,690	36,842,620	15.7%

Data Source: Centers for Disease Control and Prevention, Behavioral Risk Factor Surveillance System. Additional data analysis by CARES. 2006-10. Source geography: County

Percent Adults with Poor Dental Health



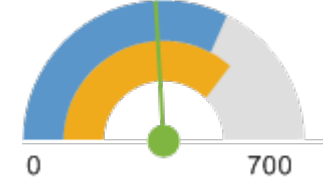
## **STI - Chlamydia Incidence**

This indicator reports incidence rate of chlamydia cases per 100,000 population. This indicator is relevant because it is a measure of poor health status and indicates the prevalence of unsafe sex practices.

Report Area	Total Population	Total Chlamydia Infections	Chlamydia Infection Rate (Per 100,000 Pop.)
Lee County, IL	34,858	118	338.52
Illinois	12,882,855	66,424	515.6
United States	316,128,839	1,441,789	456.08

Data Source: US Department of Health Human Services, Health Indicators Warehouse. Centers for Disease Control and Prevention, National Center for HIV/AIDS, Viral Hepatitis, STD, and TB Prevention. 2014. Source geography: County

Chlamydia Infection Rate (Per 100,000 Pop.)



Lee County, IL (338.52)  
 Illinois (515.6)  
 United States (456.08)

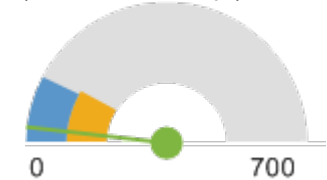
## **STI - Gonorrhea Incidence**

This indicator reports incidence rate of Gonorrhea cases per 100,000 population. This indicator is relevant because it is a measure of poor health status and indicates the prevalence of unsafe sex practices.

Report Area	Total Population	Total Gonorrhea Infections	Gonorrhea Infection Rate (Per 100,000 Pop.)
Lee County, IL	34,858	9	25.82
Illinois	12,879,032	15,970	124
United States	316,128,839	350,062	110.73

Data Source: US Department of Health Human Services, Health Indicators Warehouse. Centers for Disease Control and Prevention, National Center for HIV/AIDS, Viral Hepatitis, STD, and TB Prevention. 2014. Source geography: County

Gonorrhea Infection Rate (Per 100,000 Pop.)

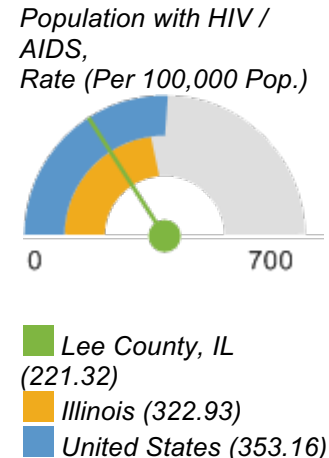


Lee County, IL (25.82)  
 Illinois (124)  
 United States (110.73)

## STI - HIV Prevalence

This indicator reports prevalence rate of HIV per 100,000 population. This indicator is relevant because HIV is a life-threatening communicable disease that disproportionately affects minority populations and may also indicate the prevalence of unsafe sex practices.

Report Area	Population Age 13	Population with HIV / AIDS	Population with HIV / AIDS, Rate (Per 100,000 Pop.)
Lee County, IL	29,821	66	221.32
Illinois	10,739,418	34,681	322.93
United States	263,765,822	931,526	353.16



Data Source: US Department of Health Human Services, Health Indicators Warehouse. Centers for Disease Control and Prevention, National Center for HIV/AIDS, Viral Hepatitis, STD, and TB Prevention. 2013. Source geography: County

Please see [Health Indicators Report footnotes](#) for information about the data background, analysis methodologies and other related notes.

Report prepared by [Community Commons](#), August 08, 2016.

## Miscellaneous Indicators from Additional Sources

### 2016 County Health Rankings:

- Alcohol was involved in **26%** of Lee County driving deaths compared to **36%** in the state overall
- There were **15** drug overdose deaths in Lee County; the drug overdose mortality rate (deaths per 100,000 population) was **14** as compared to **13.1** in the state overall.

*The U.S. rate of drug overdose deaths has increased by 79% nationwide, with a 200% increase in deaths involving opioids since the year 2000.*

### IQUERY:

- The rate of babies born to mothers who smoked during pregnancy was **224.7** compared to **235** for rural counties combined compared to **89.9** for Illinois overall. (2007-2009)

## Top 10 Leading Causes of Death for Lee in 2012

Indicator Name	Total
Deaths by malignant neoplasms	88
Deaths by diseases of heart	77
Deaths by cerebrovascular diseases	22
Deaths by chronic lower respiratory diseases	17
Deaths by accidents	15
Deaths by diabetes mellitus	7
Deaths by influenza and pneumonia	6
Deaths by Alzheimer's disease	6
Deaths by nephritis, nephrotic syndrome and nephrosis	5
Deaths by anemias	4

Source: Illinois Department of Public Health's IQUERY, 2012